

### Etton Parish Council Correspondence Record

#### 9 January 2017 to 8 March 2017

The Clerk will circulate correspondence when considered appropriate. If Councillors would like to see a copy of correspondence that has not be circulated, please notify the Clerk on [ettonpc@outlook.com](mailto:ettonpc@outlook.com) or 07887 533057.

Ref	Date Received	Attached?	From	Purpose of Correspondence
164	13/1/17	Y	ERYC	Response to ERYC CCG on Urgent Care Services
164	20/1/17	N	ERYC	Reminder to review Community Emergency Plan
165	12/2/17	N	Easily	Confirmation of Website Renewal
166	16/2/17	N	ERYC	Planning Consultation for 17/00331/PLF The Light Dragoon 34 Main Street Etton East Riding Of Yorkshire HU17 7PQ
167	20/2/17	N	ERYC	BT have assured us that they are not aware of any capacity issues for the cabling serving Etton premises
168	23/2/17	N	Zurich	Insurance Renewal
169	24/2/17	Y	ERYC	Providing advanced notice that in future planning applications will be advertised on street signs / lampposts and not delivered to affected properties.
170	1/3/2017	N	ERYC	Date for Etton Walkabout proposed for 09:45am, 16 <sup>th</sup> May 2017
171	6/3/17	N	ERYC	Suggesting site visit to look at Warter Lane Road Verge
172	7/3/17	N	ERYC	Planning Consultation for 17/00210/PLF 2 Templar View Etton East Riding Of Yorkshire HU17 7FG - Construction of glazed canopy



# EAST RIDING

OF YORKSHIRE COUNCIL

County Hall Beverley East Riding of Yorkshire HU17 9BA Telephone (01482) 887700

[www.eastriding.gov.uk](http://www.eastriding.gov.uk)

Caroline Lacey Director of Corporate Resources

Jane Hawcard - Chief Officer  
East Riding of Yorkshire Clinical Commissioning Group  
Health House  
Grange Park Lane  
Willerby  
HU10 6DT

**Your Ref:**  
**Our Ref:** Urgent Care Services Consultation  
**Enquiries to:** Gareth Naidoo  
**Email:** [gareth.naidoo@eastriding.gov.uk](mailto:gareth.naidoo@eastriding.gov.uk)  
**Tel. Direct:** (01482) 393206  
**Date:** 13 January 2017

Dear Jane

## Consultation on Urgent Care Services - Health, Care and Wellbeing Overview and Scrutiny Sub-Committee Response

I write on behalf of the Health, Care and Wellbeing Overview and Scrutiny Sub-Committee as a statutory consultee in the Urgent Care Services consultation. Please find enclosed the response to the consultation from the Sub-Committee.

May I take this opportunity to thank the CCG and all its officers that have participated in discussion with the Sub-Committee and provided it with all the relevant and necessary information over the course of the consultation. It has been much appreciated the openness with which the CCG has worked with the Sub-Committee on this matter and for all the support the CCG has provided the Sub-Committee with so that it can make a fully informed response to the consultation. The Sub-Committee thank the CCG for its co-operation and willingness to continue to listen to its concerns on this matter.

I do hope that the CCG, its Council of Members and its Governing Body seriously consider the views, concerns and recommendations of the Sub-Committee raised in the attached response when making its decision, and kindly request that this response is distributed to all Members for their consideration.

The Sub-Committee look forward to receiving the outcome of the consultation and the CCG's decision in due course and hope to continue its close working relationship with the CCG in the future.

If you require any further information, please do not hesitate to contact me.

Yours sincerely

Gareth Naidoo - Senior Committee Manager  
for the Health, Care and Wellbeing Overview and Scrutiny Sub-Committee

Enc. Response of the East Riding of Yorkshire Council's Health, Care and Wellbeing Overview and Scrutiny Sub-Committee Response to East Riding of Yorkshire Clinical Commissioning Group's Urgent Care Services Consultation

cc. All East Riding of Yorkshire Clinical Commissioning Group Council of Members  
All Members of East Riding of Yorkshire Clinical Commissioning Group Governing Body  
Quintina Davies - Head of Communications and Engagement

## **Response of the East Riding of Yorkshire Council's Health, Care and Wellbeing Overview and Scrutiny Sub-Committee Response to East Riding of Yorkshire Clinical Commissioning Group's Urgent Care Services Consultation**

---

Local people care passionately for and value their local NHS services and this has never been more so recognised than during this consultation. The consultation has provided a huge outcry of strong public feeling regarding the consultation options. Representations have been made by the public to this Sub-Committee, ward, town and parish councillors, MPs, the media and GPs. Strength of public opinion for their local services has been encapsulated by the sheer number of signatories to the many petitions established across the East Riding. The Health, Care and Wellbeing Overview and Scrutiny Sub-Committee can only but echo East Riding resident's concerns and fears for their local NHS services and urge East Riding of Yorkshire Clinical Commissioning Group to give these due consideration when making its decision.

The Health, Care and Wellbeing Overview and Scrutiny Sub-Committee do, however, understand the need for change across health and social care sector and recognise the financial challenges facing East Riding of Yorkshire Clinical Commissioning Group set against the context of the Humber, Coast and Vale Sustainability and Transformation Plan and the directive from NHS England for urgent care centres.

### **Proposed Options for Urgent Care Centres**

#### Summary of Health, Care and Wellbeing Overview and Scrutiny Sub-Committee views

- The Health, Care and Wellbeing Overview and Scrutiny Sub-Committee agree there is a need to standardise service provision across the East Riding and support, in principle, the creation and development of Urgent Care Centres across the East Riding.
- The Health, Care and Wellbeing Overview and Scrutiny Sub-Committee believe that the Urgent Care Centre guidance issued by NHS England does not differentiate between very well populated urban settings and large rural areas such as the East Riding. The Health, Care and Wellbeing Overview and Scrutiny Sub-Committee believe the guidance issued has been too rigidly applied by East Riding of Yorkshire Clinical Commissioning Group and is not reflective of the East Riding geography, which covers almost 1,000 square miles, and population need.
- The Health, Care and Wellbeing Overview and Scrutiny Sub-Committee do not believe that the options consulted on provide East Riding residents with equal access to quality health and care services.
- The Health, Care and Wellbeing Overview and Scrutiny Sub-Committee do not feel the options consulted on meet all residents' needs, particularly when taking into account rurality, highways network and transport provision.
- The Health, Care and Wellbeing Overview and Scrutiny Sub-Committee is extremely disappointed that the options consulted on were limited and, for example, did not provide any options for Driffield and the Holderness coast.
- The Health, Care and Wellbeing Overview and Scrutiny Sub-Committee believe that the list of 81 options used for shortlisting did not consider maintaining one Minor Injury Unit (for example in Driffield or along the Holderness coast), or some other form of placed based service, whilst creating two or three Urgent Care Centres. The Health, Care and Wellbeing Overview and Scrutiny Sub-Committee believe this to be a missed opportunity in the pre-consultation work and consultation options put forward.
- The Health, Care and Wellbeing Overview and Scrutiny Sub-Committee feel the bespoke model developed by East Riding of Yorkshire Clinical Commissioning Group has not been tested robustly based on current operations and due diligence applied to provide the necessary levels of assurance.

## Alternative option proposed by the Health, Care and Wellbeing Overview and Scrutiny Sub-Committee

- That the East Riding of Yorkshire Clinical Commissioning Group maintain some place based services in the Driffield, Hornsea and Withernsea even if this means reduced hours - whether this be a Minor Injury Unit, a reduced Urgent Care Centre or something else to meet need, including seasonal variation.

This alternative provision could be funded by re-considering the way place based services are commissioned across the system, for example in the Driffield and Holderness area (ie how community services, ambulance services, patient transport services and primary care services etc. are provided).

## Concerns of the Health, Care and Wellbeing Overview and Scrutiny Sub-Committee

- The opportunity provided to better understand the modelling process was welcomed by the Health, Care and Wellbeing Overview and Scrutiny Sub-Committee but confidence is still lacking as the model used should have been tested on current financial costs, not on predicted operational costs, to ensure a truer picture. There is therefore a lack of due diligence in the model and the Health, Care and Wellbeing Overview and Scrutiny Sub-Committee do not have the assurance that the options proposed are viable.
- Assumptions in the model are founded on changes being made to primary care but the Health, Care and Wellbeing Overview and Scrutiny Sub-Committee heard that no firm proposals have been agreed by primary care providers. It is evident that some primary care providers are not supportive of the proposals, even though some of these are part of East Riding of Yorkshire Clinical Commissioning Group's Council of Members, and the Health, Care and Wellbeing Overview and Scrutiny Sub-Committee believe this to be a significant challenge for the East Riding of Yorkshire Clinical Commissioning Group to overcome.
- It would appear that the opportunity has not been taken to develop plans on the proposed options with providers given the changes on the horizon (ie new community services provider and the role of Yorkshire Ambulance Service). The Health, Care and Wellbeing Overview and Scrutiny Sub-Committee is unconvinced that there will be the resources and skilled workforce necessary across the whole of the East Riding and that the opportunity has been missed to consider place based strategic solutions in the first instance before developing the options for consultation.
- Whilst acknowledging that rurality has been considered by East Riding of Yorkshire Clinical Commissioning Group the assumptions in the model show approximately 30 percent of patients will not present anywhere (due to the rural nature of the East Riding, its highways infrastructure and transport provision). This may result in their eventual presentation at Hull Royal Infirmary Accident & Emergency, something that goes against what the options are trying to avoid.

### **Recommendations:**

- (i) That East Riding of Yorkshire Clinical Commissioning Group maintains some place based services in the Driffield, Hornsea and Withernsea areas (even if this means reduced hours - whether this be a Minor Injury Unit, a reduced Urgent Care Centre or something else to meet need, including seasonal variation) by re-considering the way place based services are commissioned across the system.**
- (ii) Providing some place based services in the Driffield, Hornsea and Withernsea are maintained then the Health, Care and Wellbeing Overview and Scrutiny Sub-Committee would then support the creation of three Urgent Care Centres at Goole, Beverley and Bridlington.**

## **Proposed Options for Wrap-Around Patient Care**

### Summary of Health, Care and Wellbeing Overview and Scrutiny Sub-Committee views

- The Health, Care and Wellbeing Overview and Scrutiny Sub-Committee understand that Option A is the preferred option and that Option B is more for future consideration.
- The Health, Care and Wellbeing Overview and Scrutiny Sub-Committee support, in principle, the further expansion of Time to Think beds across the East Riding but not at the detriment of the Holderness and Bridlington area.
- The Health, Care and Wellbeing Overview and Scrutiny Sub-Committee support, in principle, the development of Home First beds across the East Riding.
- The Health, Care and Wellbeing Overview and Scrutiny Sub-Committee feel that a greater level of understanding and comprehensive assurance over deliverability of the remodelled service is required by East Riding of Yorkshire Clinical Commissioning Group. For example, there has been very limited direct engagement with residential and nursing home providers and the community services workforce to make the vision a reality, particularly across the more rural parts of the East Riding. The Health, Care and Wellbeing Overview and Scrutiny Sub-Committee has great reservations that this can be achieved.
- It is felt by the Health, Care and Wellbeing Overview and Scrutiny Sub-Committee that the proposals will have huge knock-on effects for adult social care and limited assurance has been provided that there will be sufficient overall bed capacity in residential care and the workforce needs have been fully considered and understood by East Riding of Yorkshire Clinical Commissioning Group.

### Alternative option proposed by the Health, Care and Wellbeing Overview and Scrutiny Sub-Committee

- That East Riding of Yorkshire Clinical Commissioning Group reconsiders fully the population needs for community beds and residential and nursing care beds in totality to provide certainty of current and future need given that current demand on beds is very high.

### Concerns of the Health, Care and Wellbeing Overview and Scrutiny Sub-Committee

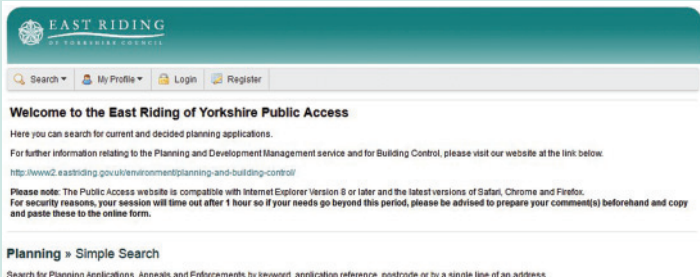
- The model data used appears to be limited - a greater degree of sensitivity analysis needs to be undertaken to take into account seasonal variation, ie high and low demand.
- The NHS struggle to recruit and retain staff in the Holderness area. The Health, Care and Wellbeing Overview and Scrutiny Sub-Committee cannot envisage how by closing the Withernsea and Bridlington beds will ensure that there will still be adequate workforce and care provision to successfully provide Time to Think beds and Home First beds.
- The Health, Care and Wellbeing Overview and Scrutiny Sub-Committee feel that there has been a lack of meaningful communication and engagement with residential or nursing homes over whether the sector can provide the required number of Home First beds and Time to Think beds.
- It is felt that East Riding of Yorkshire Clinical Commissioning Group has not fully considered the new community services provider operational plan to ensure that there is a sufficiently skilled workforce to cover the Bridlington and Holderness areas should the beds in these locations be closed.
- The Health, Care and Wellbeing Overview and Scrutiny Sub-Committee remain to be convinced regarding bed capacity as the default will be that people will end up at Hull Royal Infirmary because they will be unwilling/unable to travel to Beverley or their nearest Time to Think bed. This will increase demand at Hull Royal Infirmary which goes against what the consultation options are trying to prevent.
- Adult social care will be affected by the proposals and this has not been clearly communicated or considered by East Riding of Yorkshire Clinical Commissioning Group.

- Current demand on residential and nursing and community beds is around 97 percent. The Health, Care and Wellbeing Overview and Scrutiny Sub-Committee has huge concern that the closure of Bridlington and Withernsea community beds will only exacerbate this problem.

**Recommendations:**

- (i) The Health, Care and Wellbeing Overview and Scrutiny Sub-Committee support the principle of what is being proposed in Option A, but not the closure of beds at Bridlington and Withernsea.
- (ii) That East Riding of Yorkshire Clinical Commissioning Group fully reconsiders the population needs for community beds and residential and nursing care beds in totality to provide certainty of current and future need, given that current demand on beds is very high.

# Changes to planning application publicity



From April, the council will be publicising all planning applications by posting a site notice or site notices. This will ensure that local residents in the vicinity of an application have the opportunity to comment on planning applications.

However residents do not need to wait until they see a site notice and can be kept informed automatically of new applications in their area by registering with Public Access on the council's website.

Registering with Public Access allows users to:

- view details of planning applications and enforcement notices
- monitor the progress of planning applications and receive updates via email
- submit comments about an application
- search from a constantly updated list of applications
- view all associated documents, including plans, application forms, consultation responses and decision notices with conditions.

These changes form part of a wider initiative to encourage a greater use of technology within the council and the planning service.

Public Access can also be viewed on smart phones and tablet devices and the new site notice will include a QR code that will allow residents to scan the notice and bring up details of an application on their mobile device.

With the greater use of site notices and Public Access, the council will no longer post individual letters to neighbouring properties.

Councillor Andy Burton, cabinet

portfolio holder for planning, highways and transportation, said: "This will be a change for some of our residents but, with the increased use of new technology, encouraging greater use of Public Access will provide more opportunities for people to fully engage with the planning process and in a way that is convenient for them.

"With training and support, we have already had great success in engaging electronically with town and parish councils in the East Riding.

"This means that all town and parish councils are now able to view the progress of an application, track an application to receive email updates, submit comments and search a list of applications received and decided each week.

"By encouraging greater use of the online system, residents will be able to find out the latest information about an application in near real time."

Residents that do not have internet access can visit any of the council's libraries where computers are available to view and comment on planning applications online.

This is a free service, but will require residents to register when using the facility.

Make a note of the application number or postcode address as given on the site notice before visiting the library.

A step-by-step guide on how to use Public Access can be viewed at [www.eastriding.gov.uk/publicaccess](http://www.eastriding.gov.uk/publicaccess)

You can register for an account upon entering the Public Access website.



## LEADING LINES

LEADER OF THE COUNCIL,  
COUNCILLOR STEPHEN PARNABY OBE

I'm extremely proud of the fact East Riding of Yorkshire Council is recognised nationally as providing some of the best services in the country.

That recognition, however, doesn't come easily and takes a huge amount of hard work, innovation, drive and dedication from a lot of people.

Those people range from the council staff who empty your bins, care workers who make sure our most vulnerable residents are safe and well looked-after and the employees "behind the scenes" who use technology to make the authority more efficient or plan major infrastructure projects to improve the East Riding as a fantastic place to live, work and visit.

They include the councillors who represent their residents' views, raise issues and lobby on behalf of their communities on a variety of matters.

And they also include you – residents and businesses – who help the council to shape the services it provides through engagement with, and the support of, the local communities.

The council delivers about 600 different services and they all require expertise and commitment to ensure people are getting the best possible value for their money.

Believe me, it gets harder and harder every year to do this.

The council constantly reviews how it can not only maintain but improve services wherever possible but this is against a backdrop of ever-decreasing funding from central government

There is still uncertainty around the economic outlook and of course Brexit but while

the UK Government decides on the best strategies to deal with these issues, the council continues to have its own hugely important job to do in providing quality services to more than 330,000 residents, our communities, businesses and numerous other organisations.

Our excellent track record of strong financial management and forward planning has allowed us to avoid the knee-jerk reactions to central government funding cuts that have blighted other authorities and we will strive to continue this.

We froze council tax for five years until last year when, with the unprecedented support of the full council, we had to reluctantly increase it in the face of the funding reductions.

This year the council has again had to increase council tax, by 1.99%, with the additional 3% adult social care precept the Government introduced.

This precept will go part of the way to addressing the huge pressures the council faces to meet increasing adult social care demand but, with an ageing population, there is still a large shortfall in the financial support.

Despite this, we will keep doing our absolute best to protect the most vulnerable members of our society, which is one of the council's top priorities.

Residents had their say on the council's Budget during our annual consultation at the end of last year and we have taken those opinions on board in how we prioritise spending.

You can rest assured we will continue to focus on the things that matter most to people and do all we can to provide the best possible services to our communities and make every penny count.



**Design & Access Statement** 01\_12\_16

**The Light Dragoon – 34 Main Street, Etton, Beverley, HU17 7PQ**



The Light Dragoon – Existing Photo

Ford 13 Unit 13.12c  
Hoults Yard, Walker Road  
Newcastle upon Tyne, NE6 1AB

.....  
[www.interiordna.co.uk](http://www.interiordna.co.uk)  
[sales@interiordna.co.uk](mailto:sales@interiordna.co.uk)  
+44 (0) 191 300 0192  
+44 (0) 7508 564 475  
.....

Company No. 8737456  
VAT Reg No. 174 6918 70

**Applicant**

Mr Steve Muir  
3-4 Broadway Park  
South Gyle Broadway  
Edinburgh  
EH12 9JZ

**Architect & Agent**

James Richardson  
Interior DNA Ltd  
Ford 13  
Unit 13.12C  
Hoult's Yard  
Walker Road  
Newcastle upon Tyne  
NE6 1AB  
T: 0191 300 0192  
E: james@interiordna.co.uk

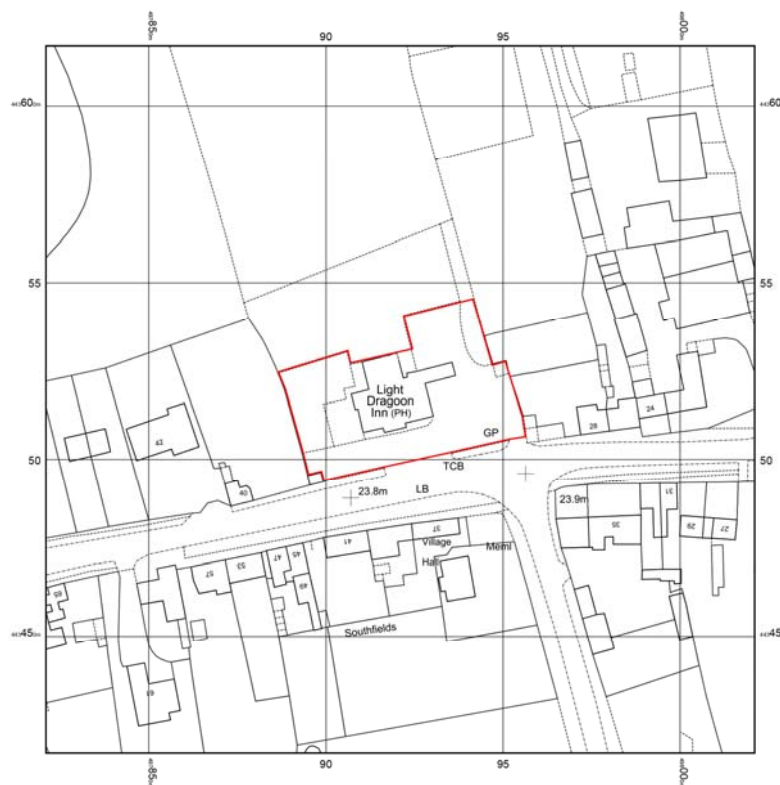
## Introduction

Our client wishes to replace 2no. kitchen extract systems as part of a larger internal kitchen refurbishment. It is proposed that both units expel through the existing roof.

## The Site & Context

For your ease of reference, the property is highlighted in red on the below site location layout.

The Light Dragon is a country pub located at the centre of Main Street, Etton. Etton, located in North Beverley, is a picturesque village which forms part of the East Riding Conservation Area. It is a 2 storey, detached building with a series of single storey blocks towards the rear, with a mix of pitched & flat roofs. Located in the centre of its own grounds, it is flanked to each side by residential properties.



The Light Dragon, 34 Main Street, Etton, Beverley HU17 7PQ – Site Location Plan – NTS

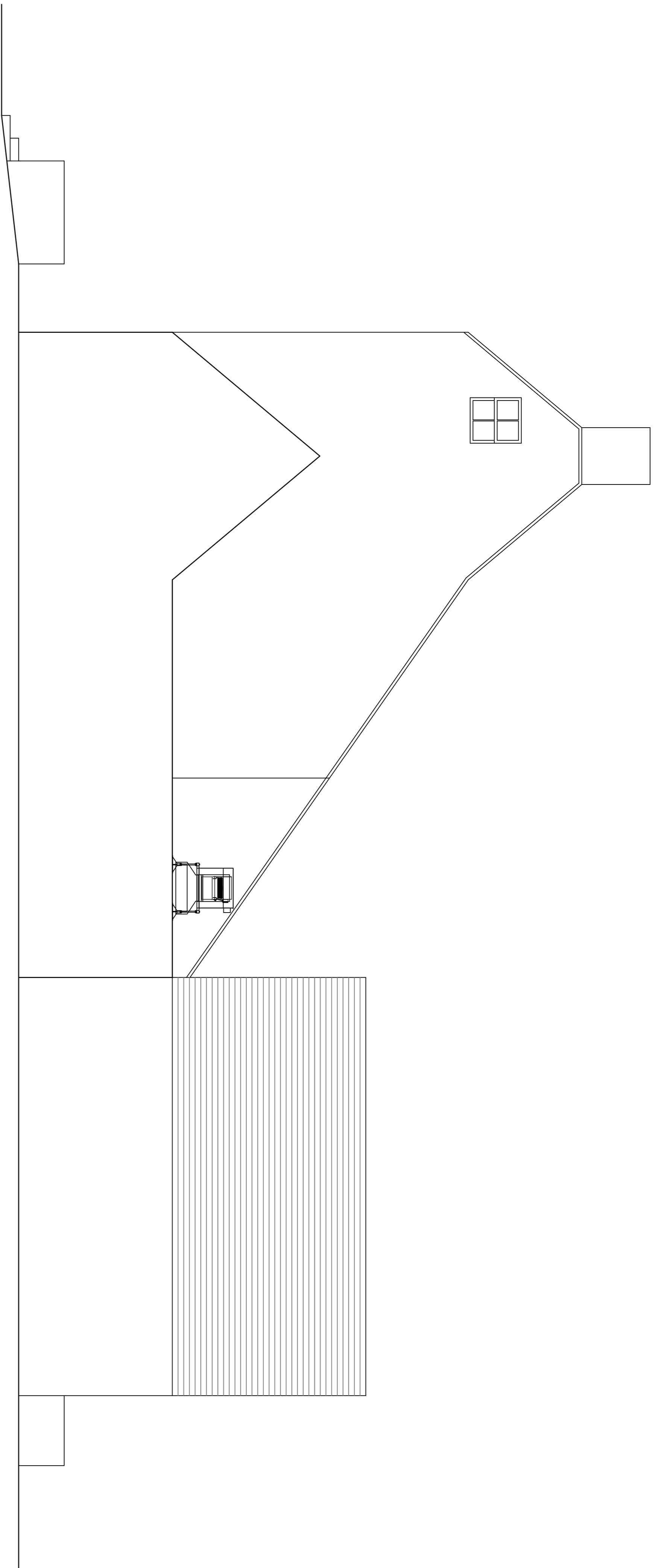
## The Use

The Light Dragon is a well-established Public House and Eatery & will remain to be so in the future.

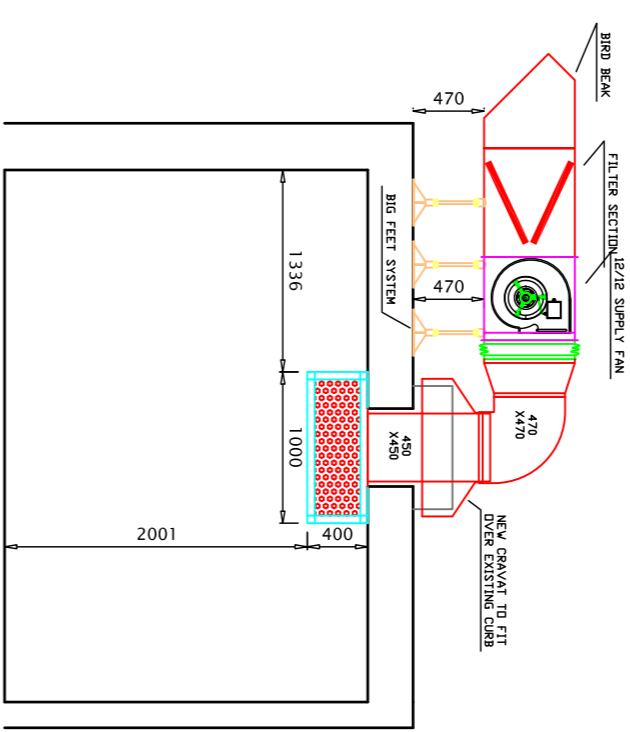
## Design

It is proposed that a new kitchen extract system be installed. This will comprise of a new kitchen extract hood which will expel via a new roof cowl located on the existing pitched roof to the rear of the property. This will require a newly formed aperture within the existing roof. In addition, it is proposed that an existing extract on the flat roof will be replaced with a new unit, which will use the existing roof aperture.

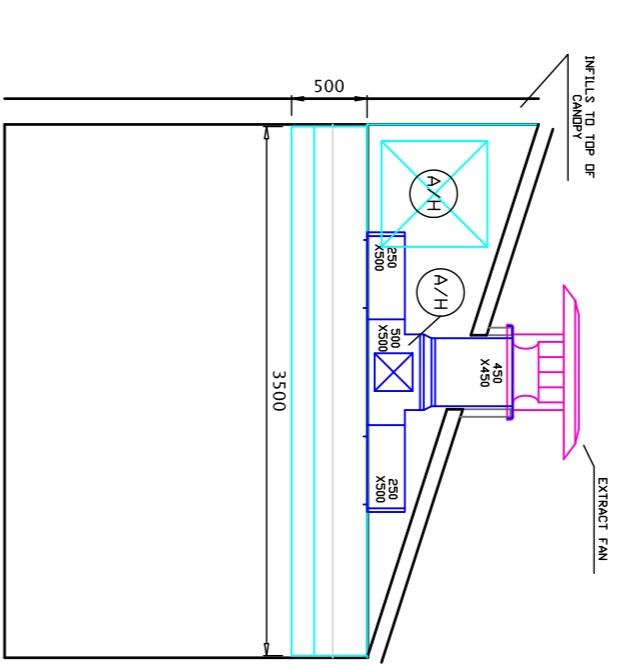
EXISTING ELEVATION AA  
SCALE 1:50



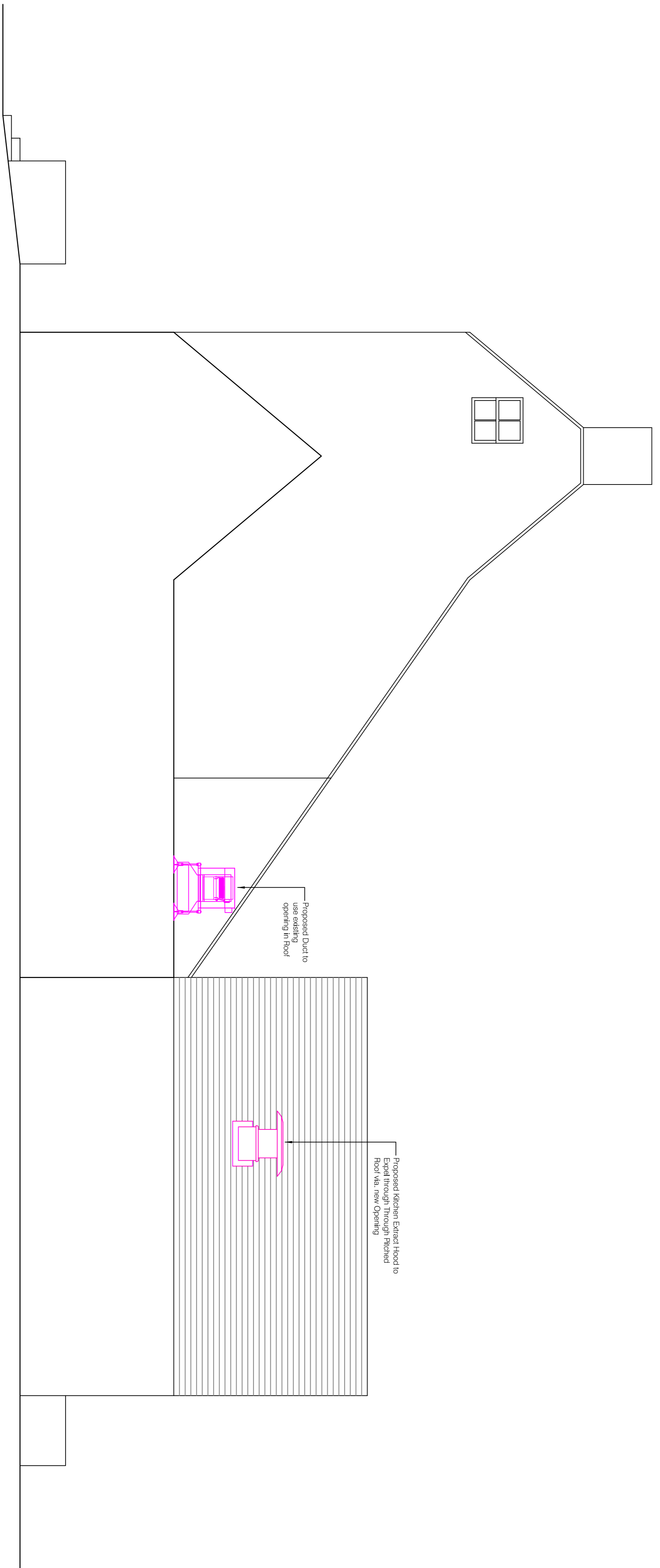
PROPOSED SECTION CC  
SCALE 1:50



PROPOSED SECTION DD  
SCALE 1:50



PROPOSED ELEVATION BB  
SCALE 1:50



REVISIONS:  
REV A

REV B

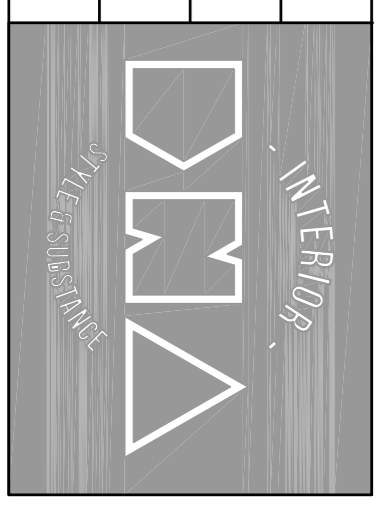
PROJECT:  
THE LIGHT DRAGON - 34 Main Street, Beverly, HIJIT PTD

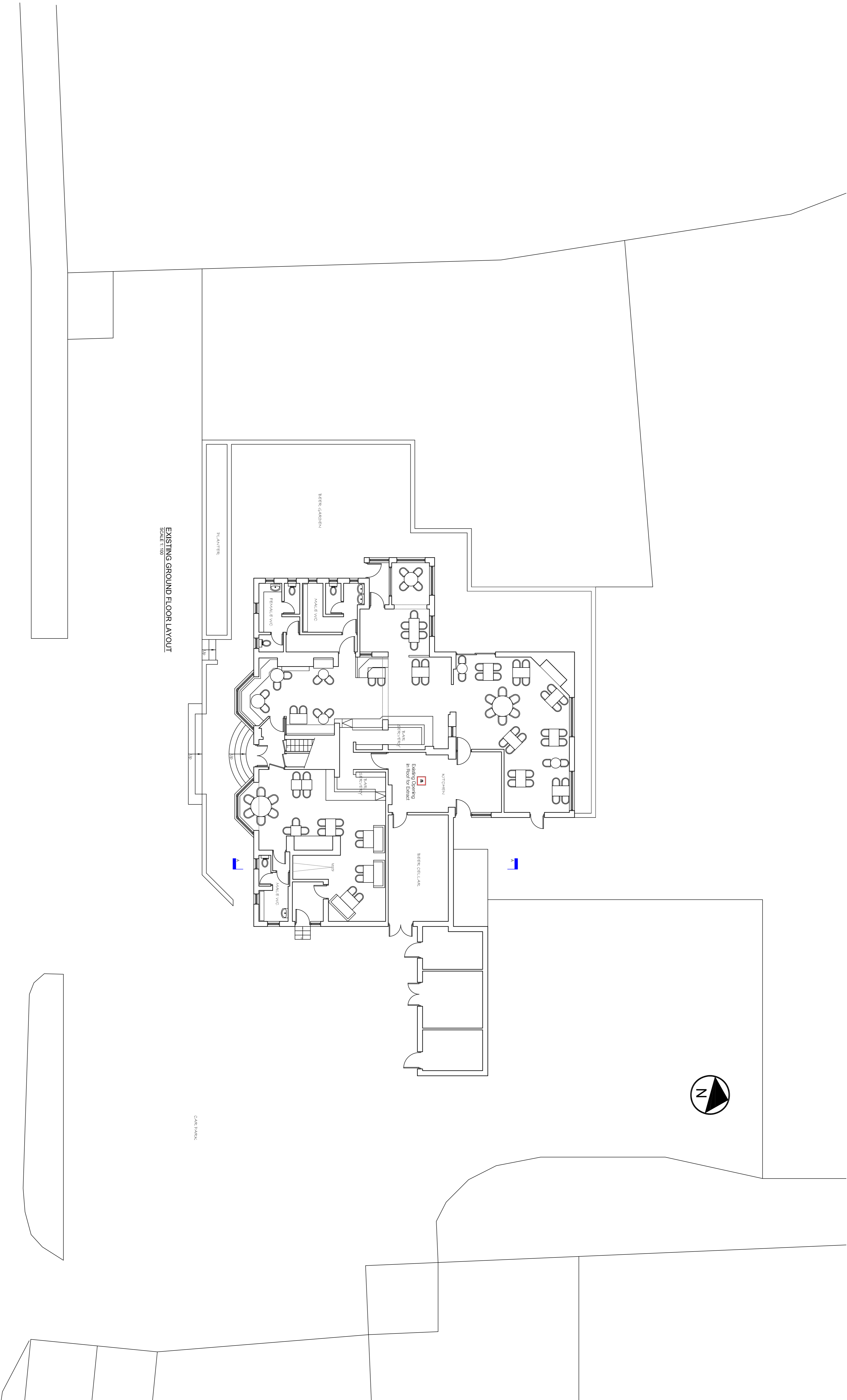
DRAWING TITLE:  
Existing & Proposed Elevations/Sections

SCALE:  
PLANNING

SCALE: 1:50 @ A1 DATE: NOV 2016 JOB NO: 05 REV: 05

INTERIOR: 13, 14, 15, 16, 17, 18, 19, 20, 21, 22, 23, 24, 25, 26, 27, 28, 29, 30, 31, 32, 33, 34, 35, 36, 37, 38, 39, 40, 41, 42, 43, 44, 45, 46, 47, 48, 49, 50, 51, 52, 53, 54, 55, 56, 57, 58, 59, 60, 61, 62, 63, 64, 65, 66, 67, 68, 69, 70, 71, 72, 73, 74, 75, 76, 77, 78, 79, 80, 81, 82, 83, 84, 85, 86, 87, 88, 89, 90, 91, 92, 93, 94, 95, 96, 97, 98, 99, 100, 101, 102, 103, 104, 105, 106, 107, 108, 109, 110, 111, 112, 113, 114, 115, 116, 117, 118, 119, 120, 121, 122, 123, 124, 125, 126, 127, 128, 129, 130, 131, 132, 133, 134, 135, 136, 137, 138, 139, 140, 141, 142, 143, 144, 145, 146, 147, 148, 149, 150, 151, 152, 153, 154, 155, 156, 157, 158, 159, 160, 161, 162, 163, 164, 165, 166, 167, 168, 169, 170, 171, 172, 173, 174, 175, 176, 177, 178, 179, 180, 181, 182, 183, 184, 185, 186, 187, 188, 189, 190, 191, 192, 193, 194, 195, 196, 197, 198, 199, 200, 201, 202, 203, 204, 205, 206, 207, 208, 209, 210, 211, 212, 213, 214, 215, 216, 217, 218, 219, 220, 221, 222, 223, 224, 225, 226, 227, 228, 229, 230, 231, 232, 233, 234, 235, 236, 237, 238, 239, 240, 241, 242, 243, 244, 245, 246, 247, 248, 249, 250, 251, 252, 253, 254, 255, 256, 257, 258, 259, 260, 261, 262, 263, 264, 265, 266, 267, 268, 269, 270, 271, 272, 273, 274, 275, 276, 277, 278, 279, 280, 281, 282, 283, 284, 285, 286, 287, 288, 289, 290, 291, 292, 293, 294, 295, 296, 297, 298, 299, 300, 301, 302, 303, 304, 305, 306, 307, 308, 309, 310, 311, 312, 313, 314, 315, 316, 317, 318, 319, 320, 321, 322, 323, 324, 325, 326, 327, 328, 329, 330, 331, 332, 333, 334, 335, 336, 337, 338, 339, 340, 341, 342, 343, 344, 345, 346, 347, 348, 349, 350, 351, 352, 353, 354, 355, 356, 357, 358, 359, 360, 361, 362, 363, 364, 365, 366, 367, 368, 369, 370, 371, 372, 373, 374, 375, 376, 377, 378, 379, 380, 381, 382, 383, 384, 385, 386, 387, 388, 389, 390, 391, 392, 393, 394, 395, 396, 397, 398, 399, 400, 401, 402, 403, 404, 405, 406, 407, 408, 409, 410, 411, 412, 413, 414, 415, 416, 417, 418, 419, 420, 421, 422, 423, 424, 425, 426, 427, 428, 429, 430, 431, 432, 433, 434, 435, 436, 437, 438, 439, 440, 441, 442, 443, 444, 445, 446, 447, 448, 449, 450, 451, 452, 453, 454, 455, 456, 457, 458, 459, 460, 461, 462, 463, 464, 465, 466, 467, 468, 469, 470, 471, 472, 473, 474, 475, 476, 477, 478, 479, 480, 481, 482, 483, 484, 485, 486, 487, 488, 489, 490, 491, 492, 493, 494, 495, 496, 497, 498, 499, 500, 501, 502, 503, 504, 505, 506, 507, 508, 509, 510, 511, 512, 513, 514, 515, 516, 517, 518, 519, 520, 521, 522, 523, 524, 525, 526, 527, 528, 529, 530, 531, 532, 533, 534, 535, 536, 537, 538, 539, 540, 541, 542, 543, 544, 545, 546, 547, 548, 549, 550, 551, 552, 553, 554, 555, 556, 557, 558, 559, 560, 561, 562, 563, 564, 565, 566, 567, 568, 569, 570, 571, 572, 573, 574, 575, 576, 577, 578, 579, 580, 581, 582, 583, 584, 585, 586, 587, 588, 589, 590, 591, 592, 593, 594, 595, 596, 597, 598, 599, 600, 601, 602, 603, 604, 605, 606, 607, 608, 609, 610, 611, 612, 613, 614, 615, 616, 617, 618, 619, 620, 621, 622, 623, 624, 625, 626, 627, 628, 629, 630, 631, 632, 633, 634, 635, 636, 637, 638, 639, 640, 641, 642, 643, 644, 645, 646, 647, 648, 649, 650, 651, 652, 653, 654, 655, 656, 657, 658, 659, 660, 661, 662, 663, 664, 665, 666, 667, 668, 669, 670, 671, 672, 673, 674, 675, 676, 677, 678, 679, 680, 681, 682, 683, 684, 685, 686, 687, 688, 689, 690, 691, 692, 693, 694, 695, 696, 697, 698, 699, 700, 701, 702, 703, 704, 705, 706, 707, 708, 709, 710, 711, 712, 713, 714, 715, 716, 717, 718, 719, 720, 721, 722, 723, 724, 725, 726, 727, 728, 729, 730, 731, 732, 733, 734, 735, 736, 737, 738, 739, 740, 741, 742, 743, 744, 745, 746, 747, 748, 749, 750, 751, 752, 753, 754, 755, 756, 757, 758, 759, 760, 761, 762, 763, 764, 765, 766, 767, 768, 769, 770, 771, 772, 773, 774, 775, 776, 777, 778, 779, 780, 781, 782, 783, 784, 785, 786, 787, 788, 789, 790, 791, 792, 793, 794, 795, 796, 797, 798, 799, 800, 801, 802, 803, 804, 805, 806, 807, 808, 809, 810, 811, 812, 813, 814, 815, 816, 817, 818, 819, 820, 821, 822, 823, 824, 825, 826, 827, 828, 829, 830, 831, 832, 833, 834, 835, 836, 837, 838, 839, 840, 841, 842, 843, 844, 845, 846, 847, 848, 849, 850, 851, 852, 853, 854, 855, 856, 857, 858, 859, 860, 861, 862, 863, 864, 865, 866, 867, 868, 869, 870, 871, 872, 873, 874, 875, 876, 877, 878, 879, 880, 881, 882, 883, 884, 885, 886, 887, 888, 889, 890, 891, 892, 893, 894, 895, 896, 897, 898, 899, 900, 901, 902, 903, 904, 905, 906, 907, 908, 909, 910, 911, 912, 913, 914, 915, 916, 917, 918, 919, 920, 921, 922, 923, 924, 925, 926, 927, 928, 929, 930, 931, 932, 933, 934, 935, 936, 937, 938, 939, 940, 941, 942, 943, 944, 945, 946, 947, 948, 949, 950, 951, 952, 953, 954, 955, 956, 957, 958, 959, 960, 961, 962, 963, 964, 965, 966, 967, 968, 969, 970, 971, 972, 973, 974, 975, 976, 977, 978, 979, 980, 981, 982, 983, 984, 985, 986, 987, 988, 989, 990, 991, 992, 993, 994, 995, 996, 997, 998, 999, 1000

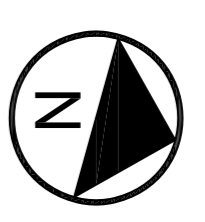




EXISTING GROUND FLOOR LAYOUT  
SCALE 1:100

MAIN STREET

CAR PARK



REVISIONS :

REV A	-	-
REV B	-	-

PROJECT :

THE LIGHT DRAUGHTON - 24 Main Street, Beverley, HU17 7JQ

CLIENT :

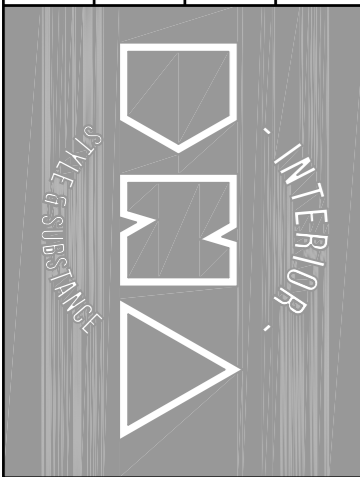
Existing Ground Floor/Site Layout

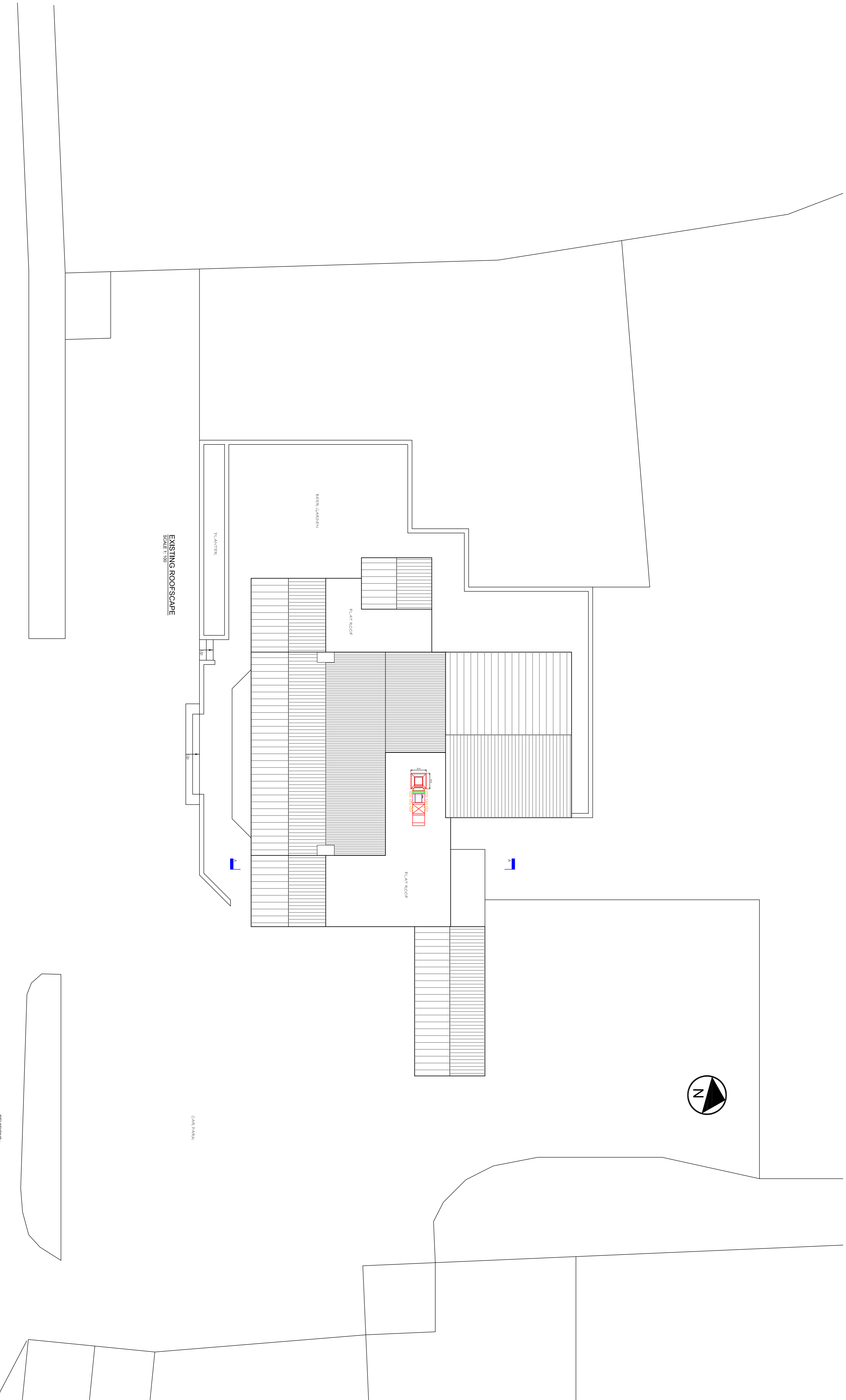
ISSUE :

PLANNING

SCALE:	DATE:	JOB NO.:	DWG.:	REV.:
1:100 @ A1	NOV 2016	-	01	-

INTERIOR DESIGN LTD, 100-110, 112, 114, 116, 118, 120, 122, 124, 126, 128, 130, 132, 134, 136, 138, 140, 142, 144, 146, 148, 150, 152, 154, 156, 158, 160, 162, 164, 166, 168, 170, 172, 174, 176, 178, 180, 182, 184, 186, 188, 190, 192, 194, 196, 198, 200, 202, 204, 206, 208, 210, 212, 214, 216, 218, 220, 222, 224, 226, 228, 230, 232, 234, 236, 238, 240, 242, 244, 246, 248, 250, 252, 254, 256, 258, 260, 262, 264, 266, 268, 270, 272, 274, 276, 278, 280, 282, 284, 286, 288, 290, 292, 294, 296, 298, 300, 302, 304, 306, 308, 310, 312, 314, 316, 318, 320, 322, 324, 326, 328, 330, 332, 334, 336, 338, 340, 342, 344, 346, 348, 350, 352, 354, 356, 358, 360, 362, 364, 366, 368, 370, 372, 374, 376, 378, 380, 382, 384, 386, 388, 390, 392, 394, 396, 398, 400, 402, 404, 406, 408, 410, 412, 414, 416, 418, 420, 422, 424, 426, 428, 430, 432, 434, 436, 438, 440, 442, 444, 446, 448, 450, 452, 454, 456, 458, 460, 462, 464, 466, 468, 470, 472, 474, 476, 478, 480, 482, 484, 486, 488, 490, 492, 494, 496, 498, 500, 502, 504, 506, 508, 510, 512, 514, 516, 518, 520, 522, 524, 526, 528, 530, 532, 534, 536, 538, 540, 542, 544, 546, 548, 550, 552, 554, 556, 558, 560, 562, 564, 566, 568, 570, 572, 574, 576, 578, 580, 582, 584, 586, 588, 590, 592, 594, 596, 598, 600, 602, 604, 606, 608, 610, 612, 614, 616, 618, 620, 622, 624, 626, 628, 630, 632, 634, 636, 638, 640, 642, 644, 646, 648, 650, 652, 654, 656, 658, 660, 662, 664, 666, 668, 670, 672, 674, 676, 678, 680, 682, 684, 686, 688, 690, 692, 694, 696, 698, 700, 702, 704, 706, 708, 710, 712, 714, 716, 718, 720, 722, 724, 726, 728, 730, 732, 734, 736, 738, 740, 742, 744, 746, 748, 750, 752, 754, 756, 758, 760, 762, 764, 766, 768, 770, 772, 774, 776, 778, 780, 782, 784, 786, 788, 790, 792, 794, 796, 798, 800, 802, 804, 806, 808, 810, 812, 814, 816, 818, 820, 822, 824, 826, 828, 830, 832, 834, 836, 838, 840, 842, 844, 846, 848, 850, 852, 854, 856, 858, 860, 862, 864, 866, 868, 870, 872, 874, 876, 878, 880, 882, 884, 886, 888, 890, 892, 894, 896, 898, 900, 902, 904, 906, 908, 910, 912, 914, 916, 918, 920, 922, 924, 926, 928, 930, 932, 934, 936, 938, 940, 942, 944, 946, 948, 950, 952, 954, 956, 958, 960, 962, 964, 966, 968, 970, 972, 974, 976, 978, 980, 982, 984, 986, 988, 990, 992, 994, 996, 998, 1000





EXISTING ROOFSCAPE  
SCALE 1:100

MAIN STREET

CARP PARK



REVISIONS:  
REV A -  
REV B -

PROJECT:  
**THE LIGHT DRAGON - 34 Main Street, Beverly, HV17 7PQ**

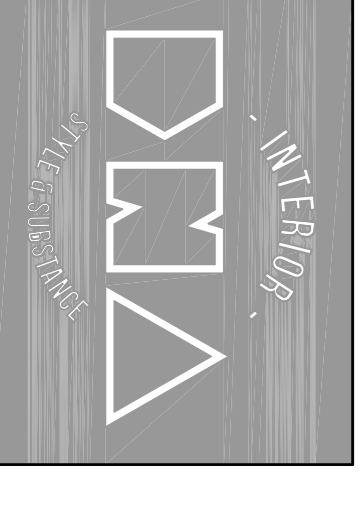
DRAWING TITLE:  
**Existing Roofscape**

SCALE:  
**1:100 @ A1 NOV 2016**

DATE:      JOB NO:      DWG:      HW: /

PLANNING

INTERIOR DESIGN: 22, GORSEY LANE, EUSTON, HERTS, AL5 2JQ. TEL: 01438 740000. WWW.INTERIORDESIGN.CO.UK  
 22, GORSEY LANE, EUSTON, HERTS, AL5 2JQ. TEL: 01438 740000. WWW.INTERIORDESIGN.CO.UK



**Heritage Statement** 01\_12\_16

**The Light Dragoon – 34 Main Street, Etton, Beverley, HU17 7PQ**



The Light Dragoon – Existing Photo

Ford 13 Unit 13.12c  
Hoults Yard, Walker Road  
Newcastle upon Tyne, NE6 1AB

.....  
[www.interiordna.co.uk](http://www.interiordna.co.uk)  
[sales@interiordna.co.uk](mailto:sales@interiordna.co.uk)  
+44 (0) 191 300 0192  
+44 (0) 7508 564 475  
.....

Company No. 8737456  
VAT Reg No. 174 6918 70

**Applicant**

Mr Steve Muir  
3-4 Broadway Park  
South Gyle Broadway  
Edinburgh  
EH12 9JZ

**Architect & Agent**

James Richardson  
Interior DNA Ltd  
Ford 13  
Unit 13.12C  
Hoult's Yard  
Walker Road  
Newcastle upon Tyne  
NE6 1AB  
T: 0191 300 0192  
E: james@interiordna.co.uk



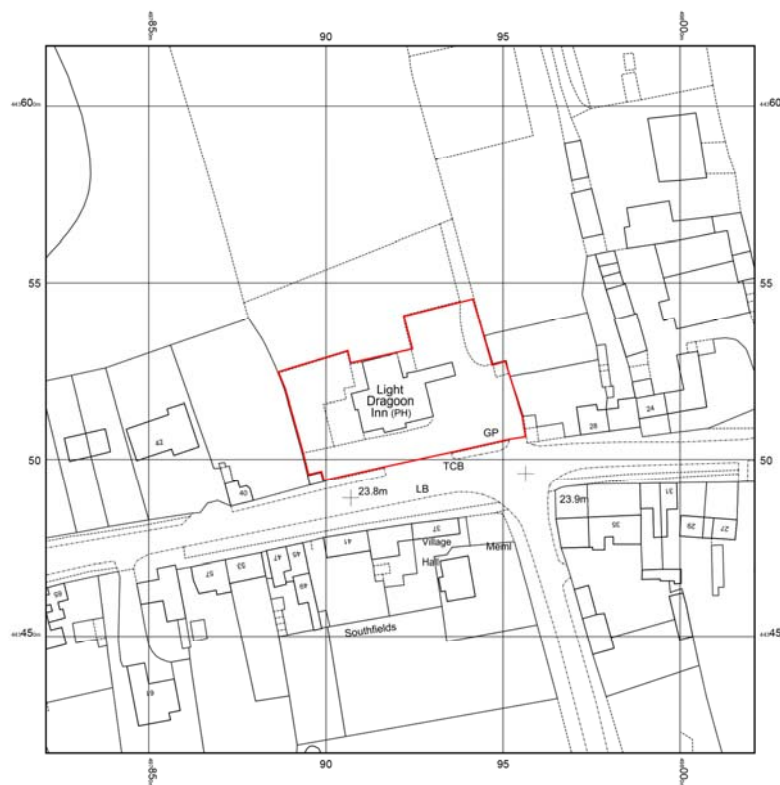
## Introduction

Our client wishes to replace 2no. kitchen extract systems as part of a larger internal kitchen refurbishment. It is proposed that both units expel through the existing roof.

## The Site & Context

For your ease of reference, the property is highlighted in red on the below site location layout.

The Light Dragon is a country pub located at the centre of Main Street, Etton. Etton, located in North Beverley, is a picturesque village which forms part of the East Riding Conservation Area. It is a 2 storey, detached building with a series of single storey blocks towards the rear, with a mix of pitched & flat roofs. Located in the centre of its own grounds, it is flanked to each side by residential properties.



The Light Dragon, 34 Main Street, Etton, Beverley HU17 7PQ – Site Location Plan – NTS

## The Use

The Light Dragon is a well-established Public House and Eatery & will remain to be so in the future.

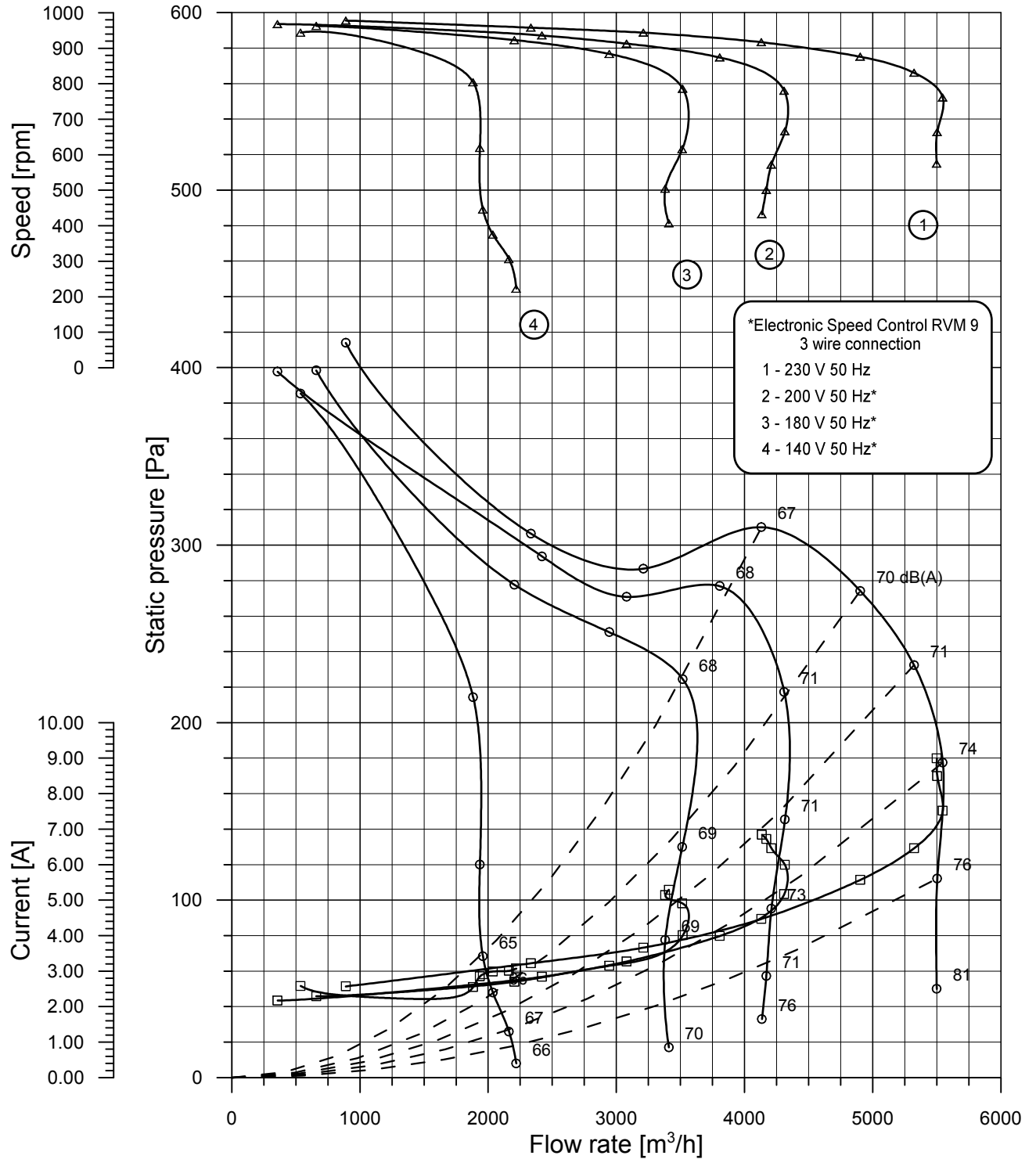
## Design

It is proposed that a new kitchen extract system be installed. This will comprise of a new kitchen extract hood which will expel via a new roof cowl located on the existing pitched roof to the rear of the property. This will require a newly formed aperture within the existing roof. In addition, it is proposed that an existing extract on the flat roof will be replaced with a new unit, which will use the existing roof aperture.

## **Historical Character**

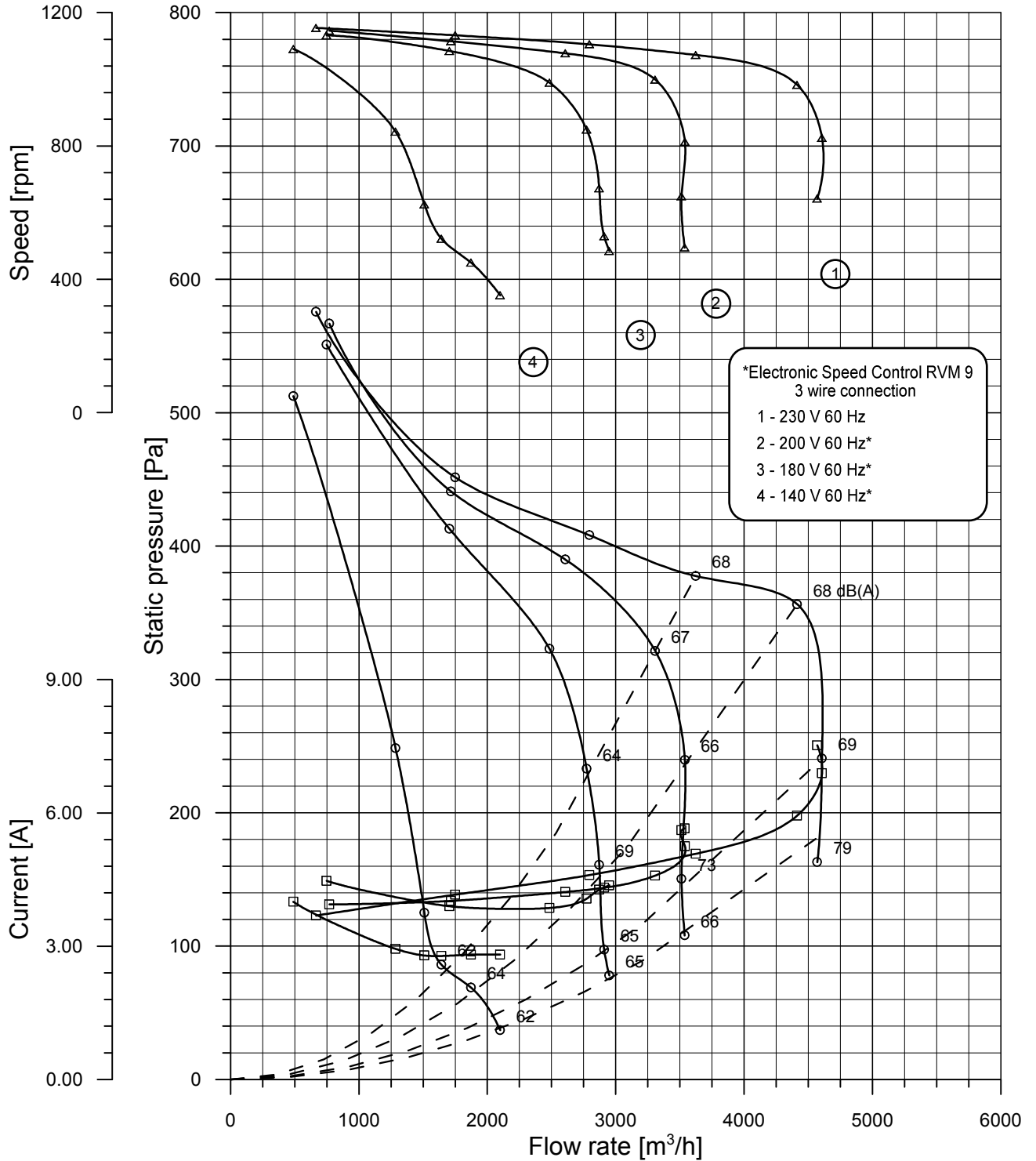
Having reviewed our client's proposals, we believe that these necessary works will have minimal impact on the historic character of the conservation area. The kitchen is located within a single storey area of the building towards the rear of the property & falls partly under an existing flat roof & partly under an existing pitched roof. The flat roof is visually well concealed from Main Street by the two storey block which forms the front elevation. The extract which is proposed to the flat roof will utilise an existing aperture within the roof & will replace an existing unit. The second kitchen extract hood will require a new aperture in the pitched roof to the rear & is proposed to expel via a roof cowl. Again, as this pitched roof area is at the rear of the property & is set back from the right-hand side gable end of the building, visually the impact of the proposed roof cowl is minimised.

Type:	DD 12/12	Watt:	1100	Amp Max:	7.67
Motor:	14195H	Volt:	230 1~	Prot.:	IP 44
Test nr.:	S4887.*	Hz:	50	T.H.:	YES-OUT
Date:	13/02/2015	Poles:	6	Ins. Cl.:	F
		$\mu$ F:	35 / 450 V		
		ErP	2015		



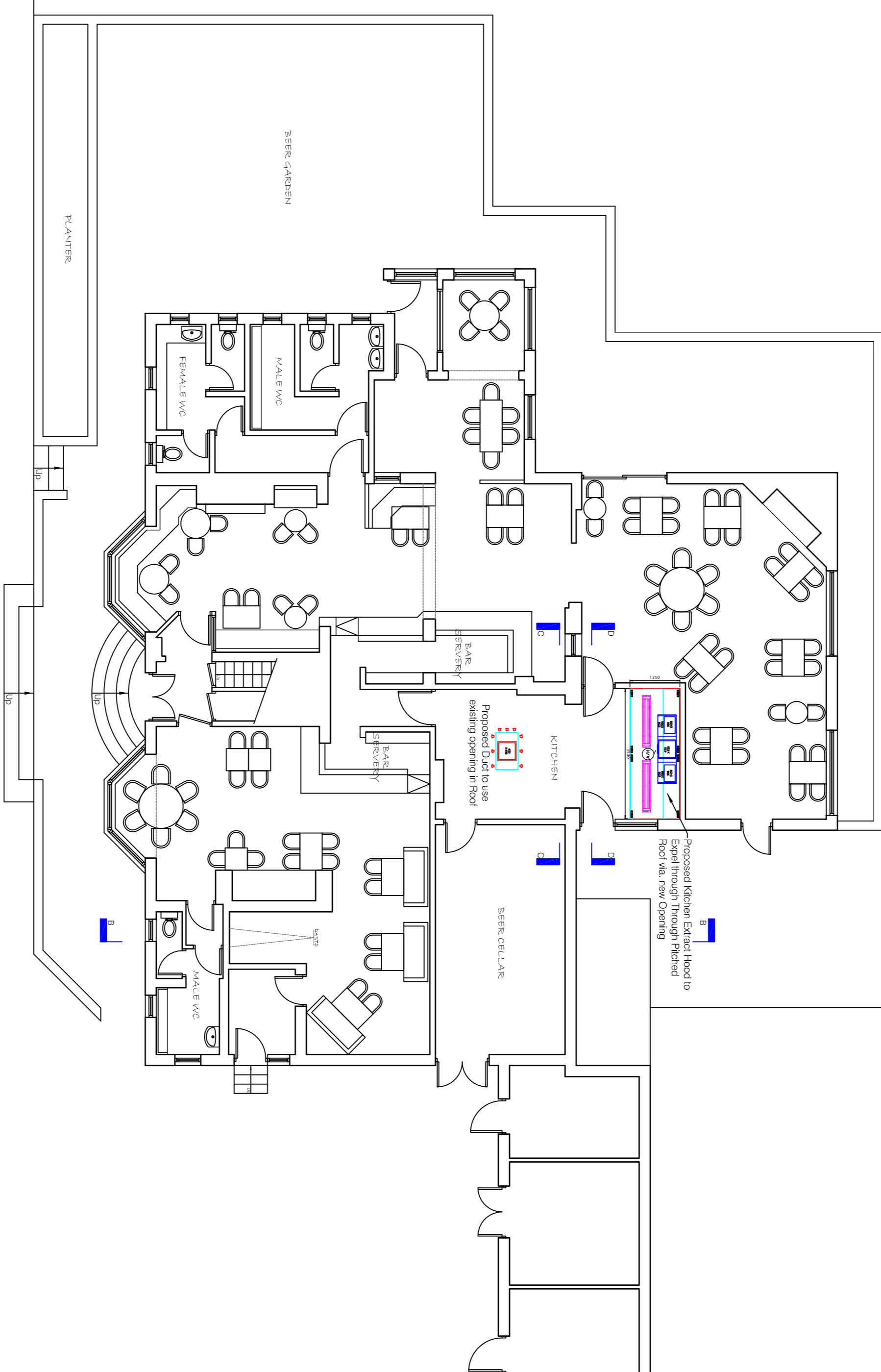
This test data obtained in a laboratory registered by AMCA for AMCA 210/99 air performance testing. Data is not certified by AMCA.

Type:	DD 12/12	Watt:	1100	Amp Max:	6.72
Motor:	14195H	Volt:	230 1~	Prot.:	IP 44
Test nr.:	S4887.*	Hz:	60	T.H.:	YES-OUT
Date:	13/02/2015	Poles:	6	Ins. Cl.:	F
		$\mu$ F:	35 / 450 V		



This test data obtained in a laboratory registered by AMCA for AMCA 210/99 air performance testing. Data is not certified by AMCA.

PROPOSED GROUND FLOOR LAYOUT  
SCALE 1:100



REVISIONS:  
REV A  
REV B

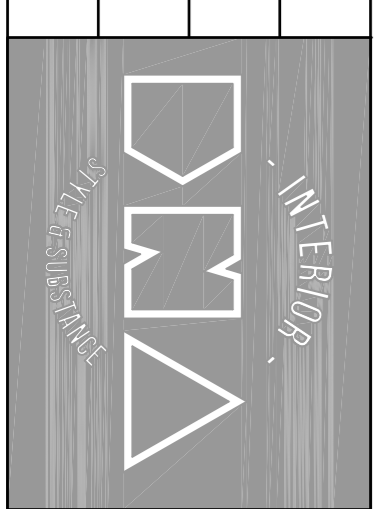
PROJECT:  
THE LIGHT DRAGON - 34 Main Street, Beverly, HU17 7PQ

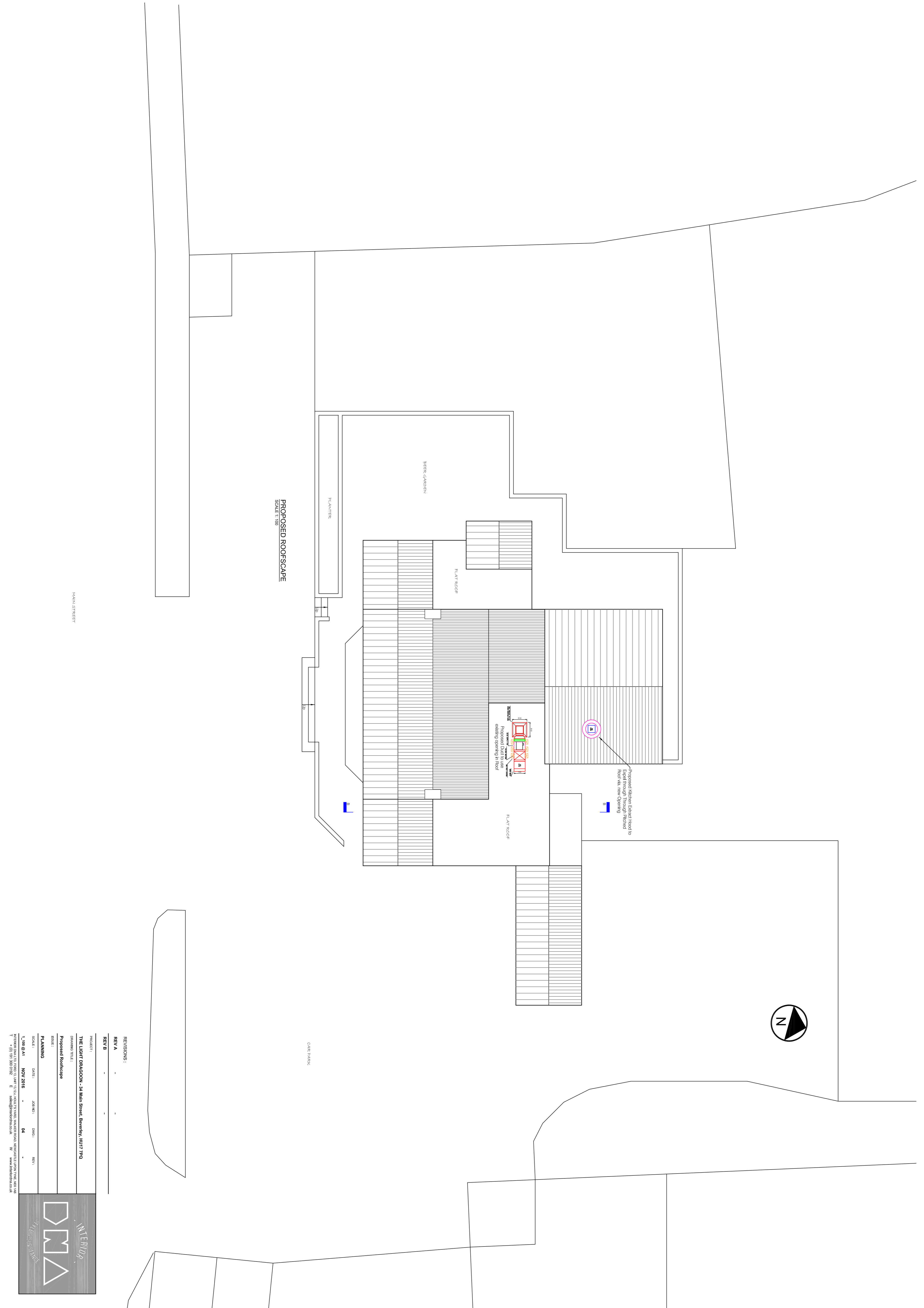
DRAWING TITLE:  
Proposed Ground Floor/Site Layout

ISSUE:  
PLANNING

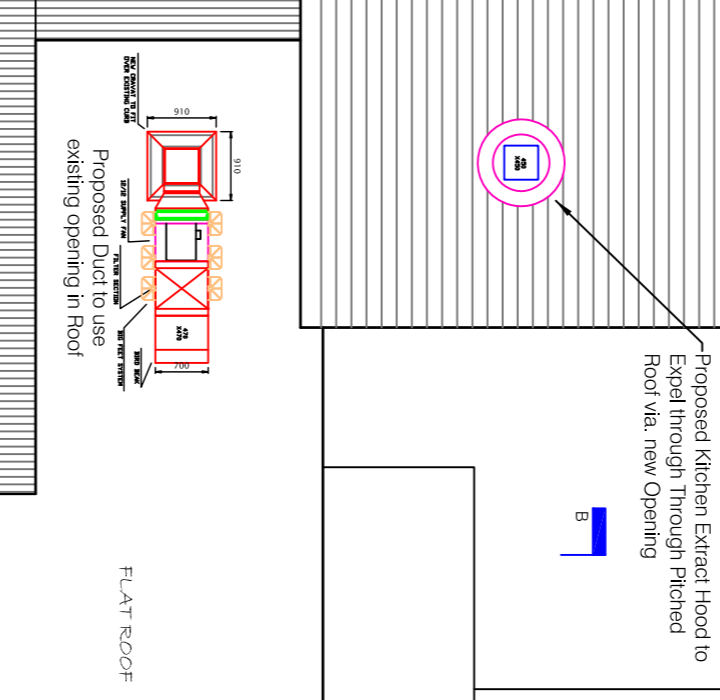
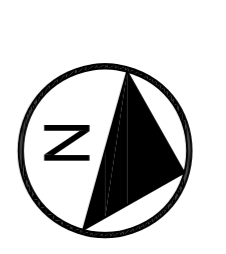
SCALE: 1:100 @ A1  
DATE: NOV 2016  
JOB NO: 02  
DWG: 02  
REV:

INTERIOR DESIGN LTD, 52ND FL, UNIT 13, 152, HORTON ROAD, WALSLEY, NOTTINGHAM, LE11 1AB  
T: + (0) 191 300 0192 E: sales@interiordesign.co.uk W: www.interiordesign.co.uk





PROPOSED ROOFSCAPE  
SCALE 1:100



REVISIONS :

REV	DESCRIPTION
REV A	-
REV B	-

PROJECT:  
THE LIGHT BRACCON - 34 Main Street, Beverly, HU17 7JQ

DRAWING TITLE:  
Proposed Roofscape

DATE: NOV 2016

SCALE: 1:100 @ A1

JOB NO: 04

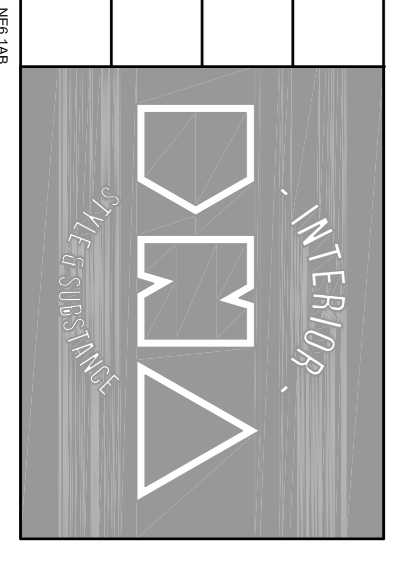
DWG: W

REV: W

ISSUED FOR: PLANNING

PROJECT NO: 191 300 0102

WWW: www.interior-dma.com



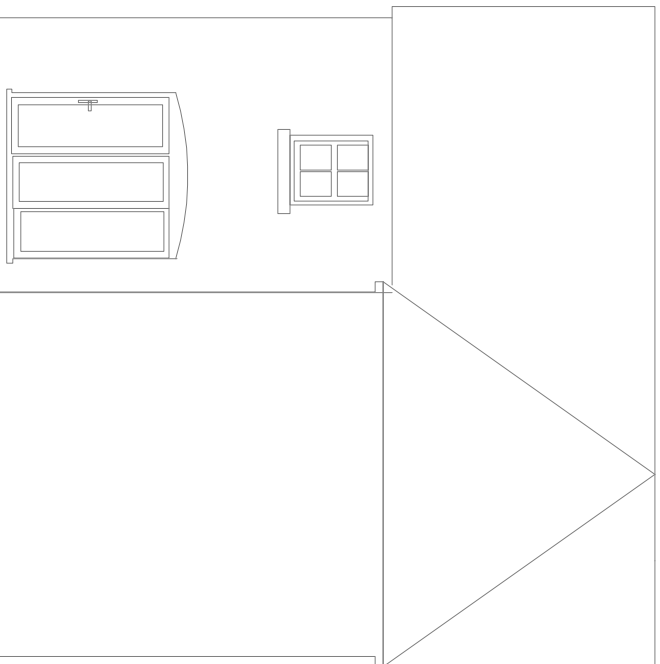
## 2 TEMPLAR VIEW



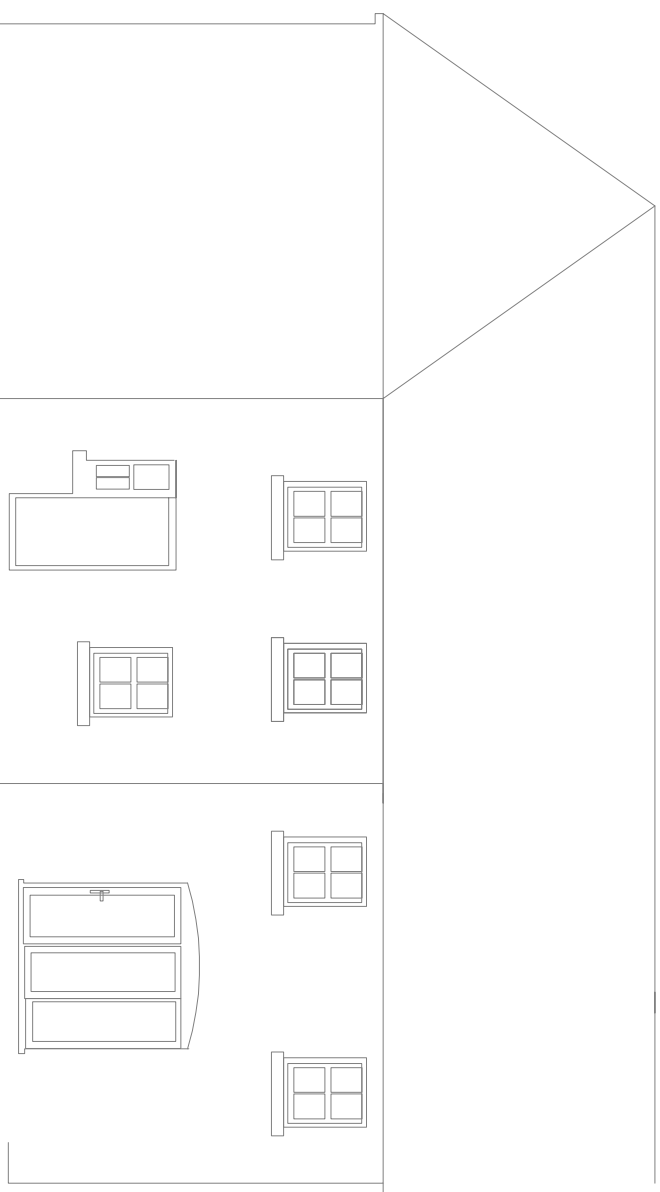
Site Plan shows area bounded by: 497568.14, 443265.38 497768.14, 443465.38 (at a scale of 1:1250) The representation of a road, track or path is no evidence of a right of way. The representation of features as lines is no evidence of a property boundary.

Produced on 17th Nov 2016 from the Ordnance Survey National Geographic Database and incorporating surveyed revision available at this date. Reproduction in whole or part is prohibited without the prior permission of Ordnance Survey. © Crown copyright 2016. Supplied by [www.buyaplan.co.uk](http://www.buyaplan.co.uk) a licensed Ordnance Survey partner (100053143). Unique plan reference: #00172827-F61EA6

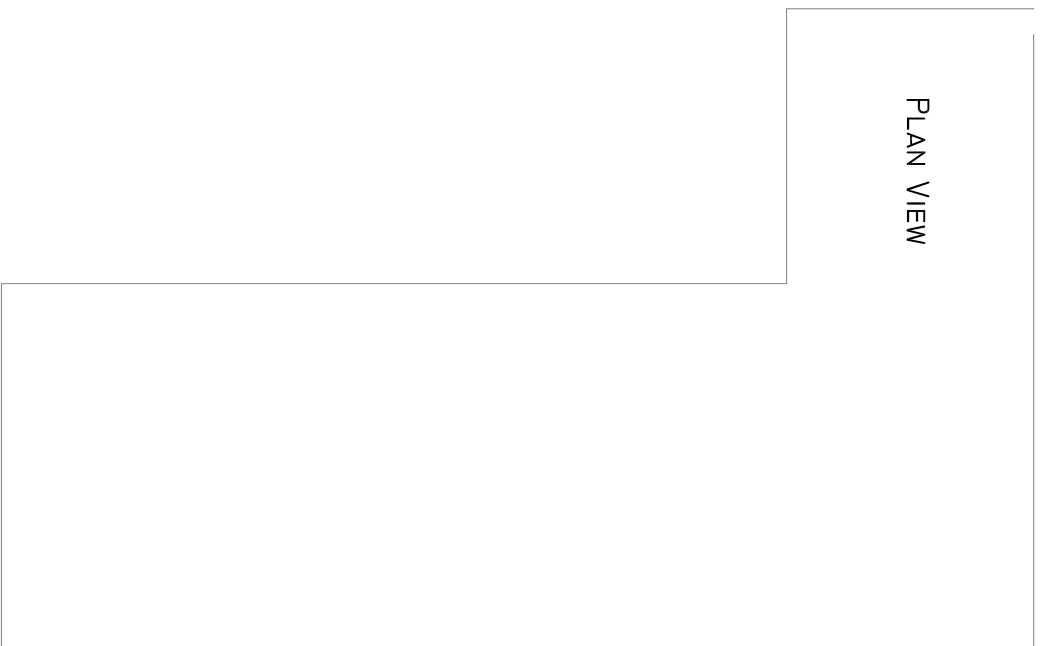
Ordnance Survey and the OS Symbol are registered trademarks of Ordnance Survey, the national mapping agency of Great Britain. Buy A Plan logo, pdf design and the [www.buyaplan.co.uk](http://www.buyaplan.co.uk) website are Copyright © Pass Inc Ltd 2016



EAST ELEVATION



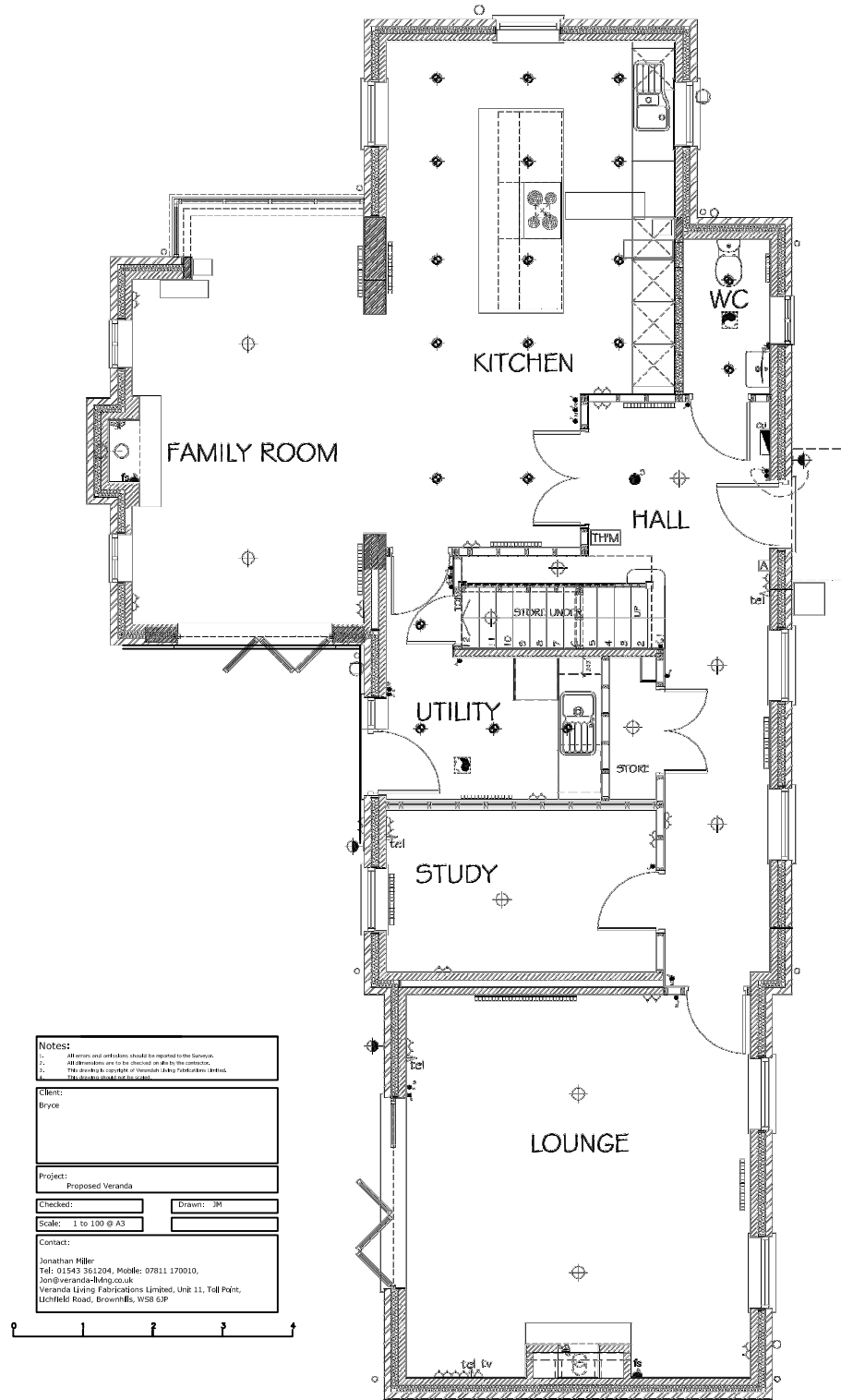
SOUTH ELEVATION



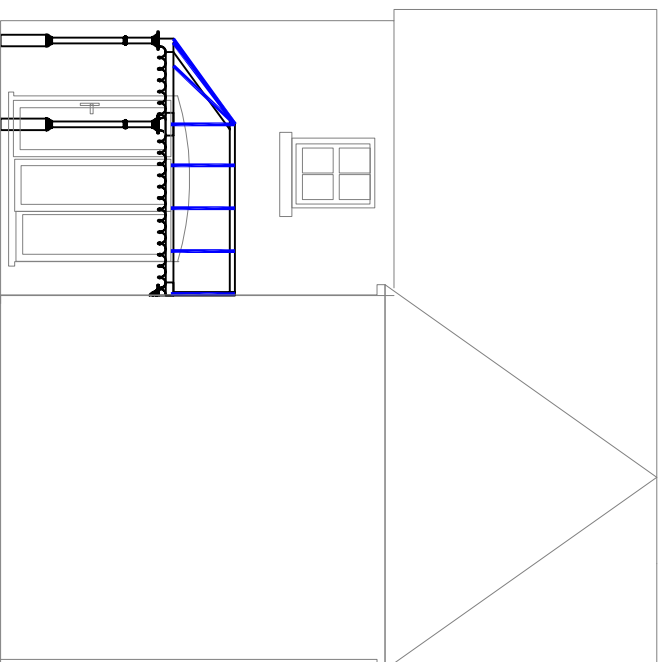
PLAN VIEW

<b>Notes:</b>	1. All work shall be in accordance with the Building Code of Australia (BCA) and the relevant standards and specifications.
	2. All materials shall be of a quality suitable for the intended use and shall be approved by the relevant authorities.
	3. The contractor shall be responsible for obtaining all necessary permits and approvals from the relevant authorities.
<b>Client:</b>	Name: _____
	Address: _____
	City: _____
	State: _____
	Postcode: _____
<b>Project:</b>	Proposed Work: _____
	Contract: _____
	Scale: 1 to 100 @ A3
	Project: 20
<b>Contract:</b>	_____
<b>Architect:</b>	Name: _____
	Address: _____
	City: _____
	State: _____
	Postcode: _____
	Phone: _____
	Mobile: _____
	Website: _____
	LinkedIn: _____
	Twitter: _____
	Facebook: _____
	Instagram: _____
	YouTube: _____
	Google+: _____
	Other: _____

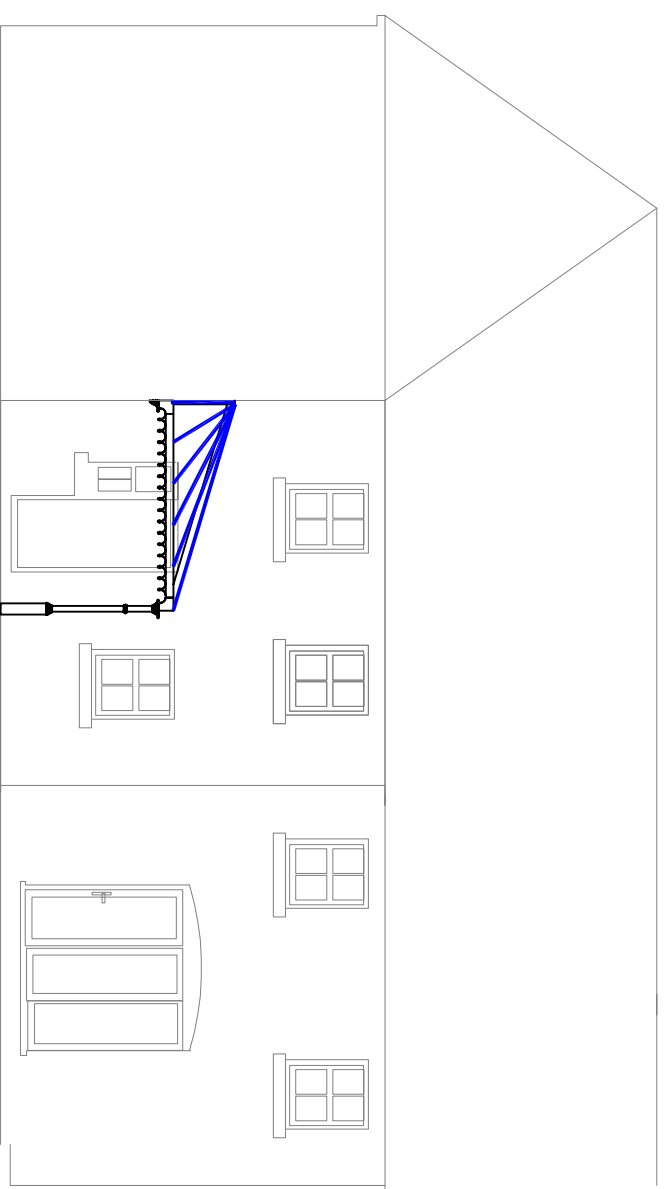




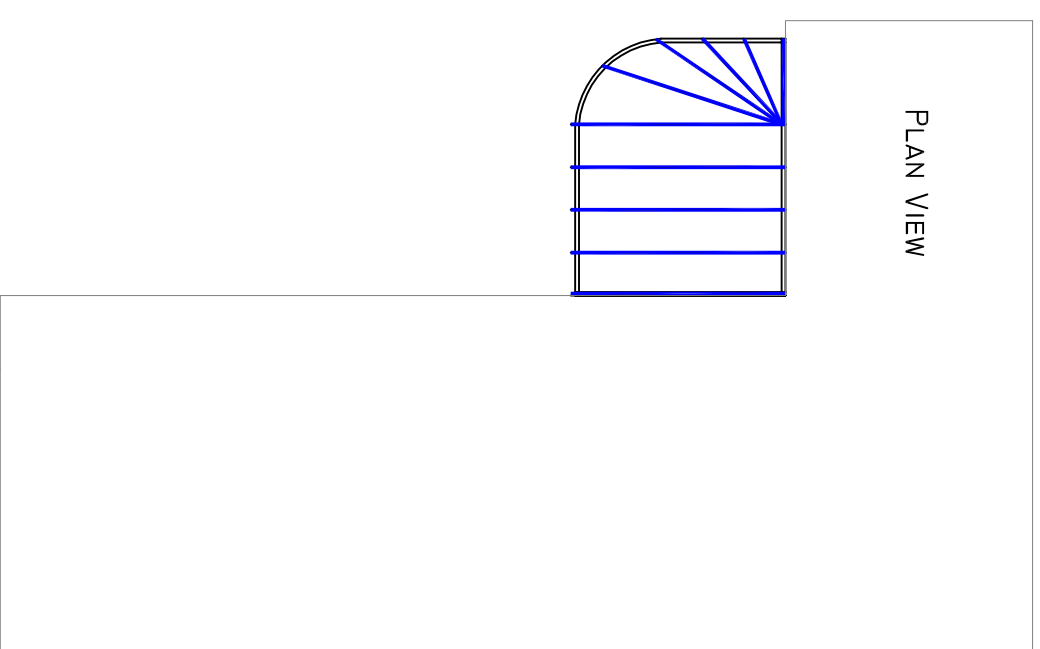
GROUND FLOOR PLAN



EAST ELEVATION



SOUTH ELEVATION



PLAN VIEW

**NOTES:**

1. All work shall be in accordance with the current edition of the International Building Code (IBC) and the International Residential Code (IRC).
2. All work shall be in accordance with the current edition of the International Mechanical Code (IMC) and the International Fuel Gas Code (IFGC).
3. All work shall be in accordance with the current edition of the International Electrical Code (IEC).
4. All work shall be in accordance with the current edition of the International Plumbing Code (IPC).
5. All work shall be in accordance with the current edition of the International Fire Code (IFC).

**Client:**  
Customer Name: [Redacted]  
Customer Address: [Redacted]

**Project:**  
Proposed Veranda

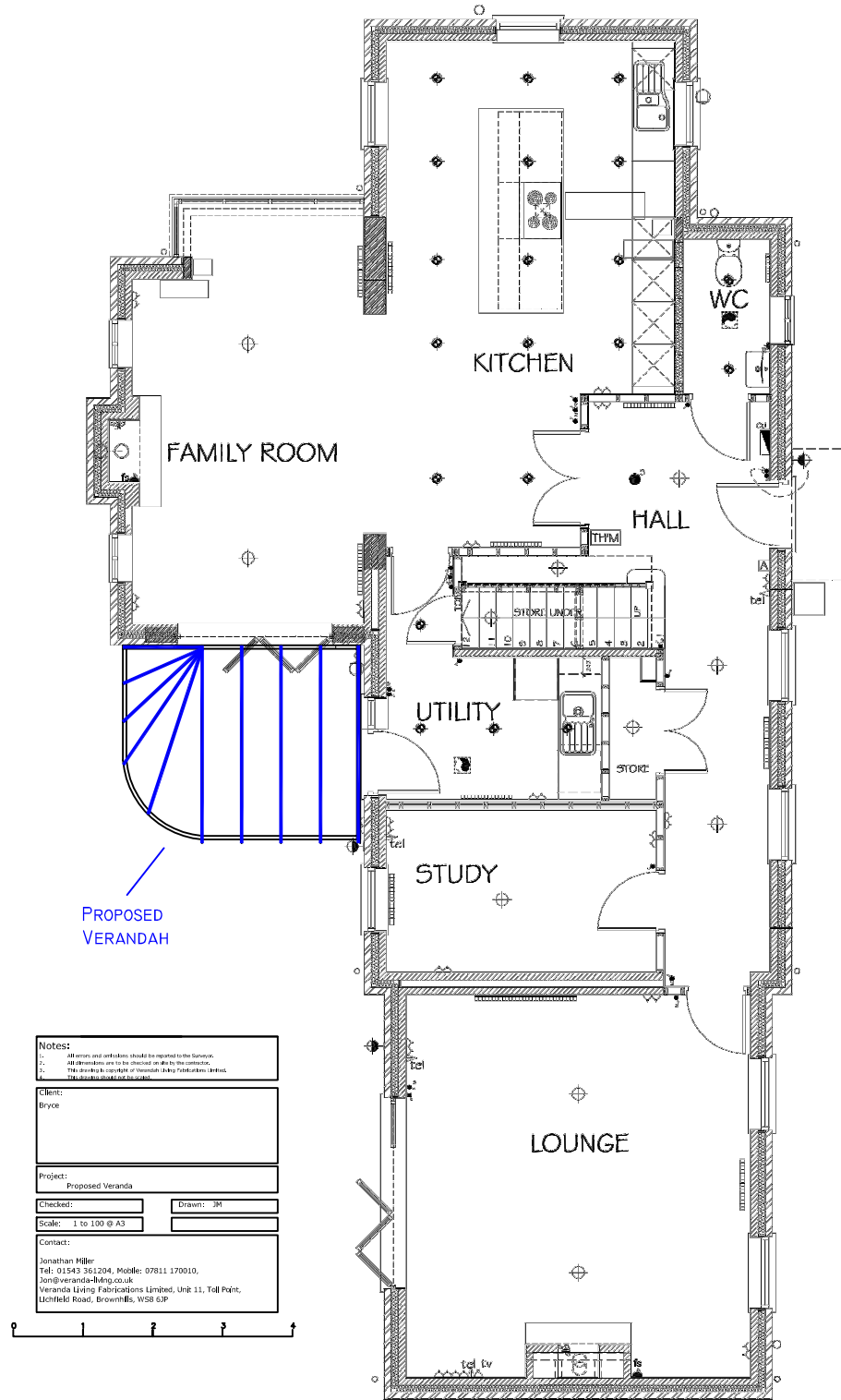
**Contractor:**  
Contractor: [Redacted]  
Scale: 1/4" = 1'-0" @ A3

**Contract:**  
Contract No.: [Redacted]  
Contract Date: [Redacted]  
Contract Value: [Redacted]

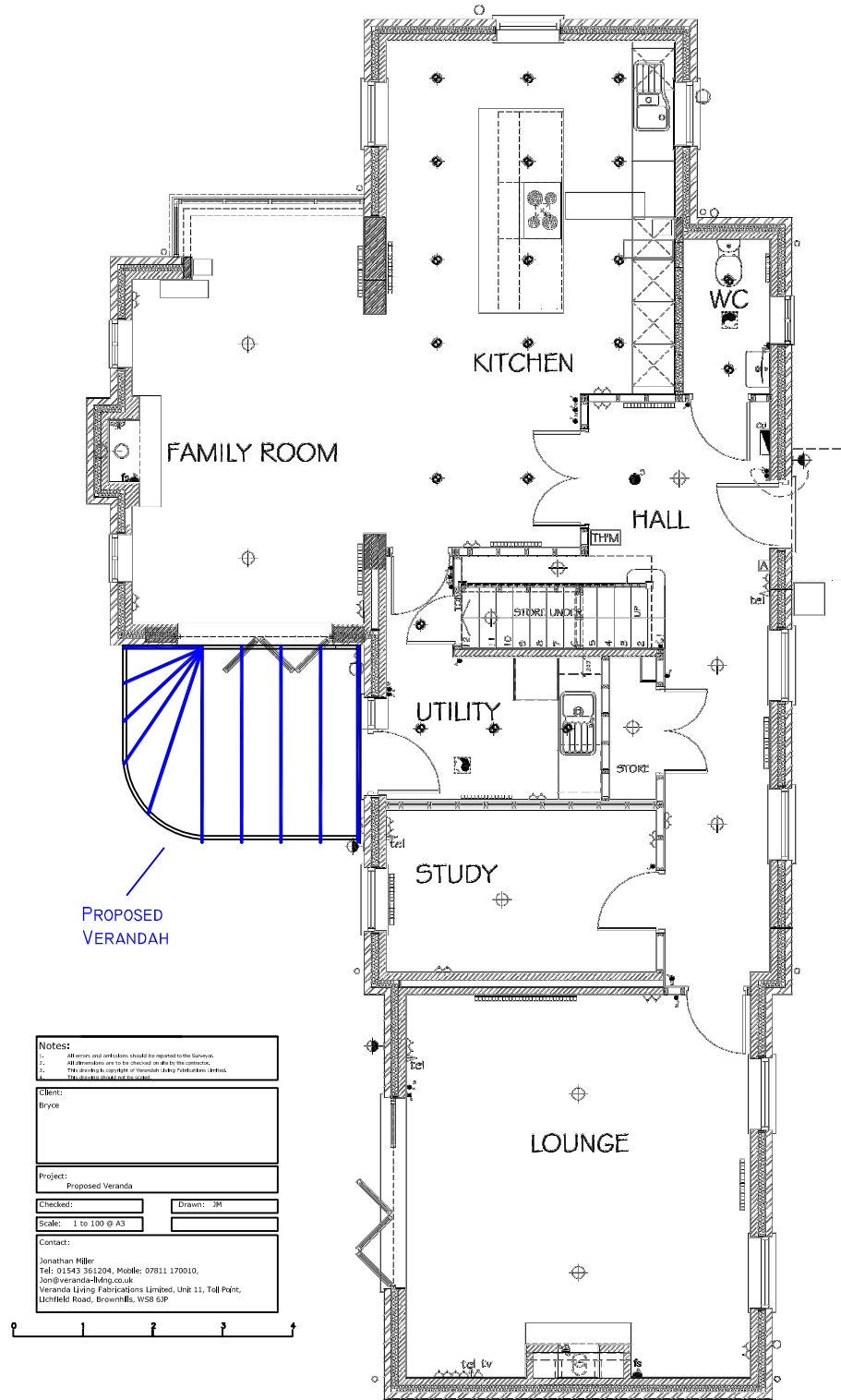
**Design:**  
Design No.: [Redacted]  
Design Date: [Redacted]  
Design Value: [Redacted]

**Approval:**  
Approved By: [Redacted]  
Approved Date: [Redacted]





GROUND FLOOR PLAN



**Notes:**

1. All doors and windows should be opened to the exterior.
2. All dimensions are to be checked on site by the contractor.
3. The drawings are the property of Veranda Living Fabrications Limited.

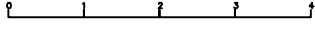
**Client:**  
Bryce

**Project:**  
Proposed Veranda

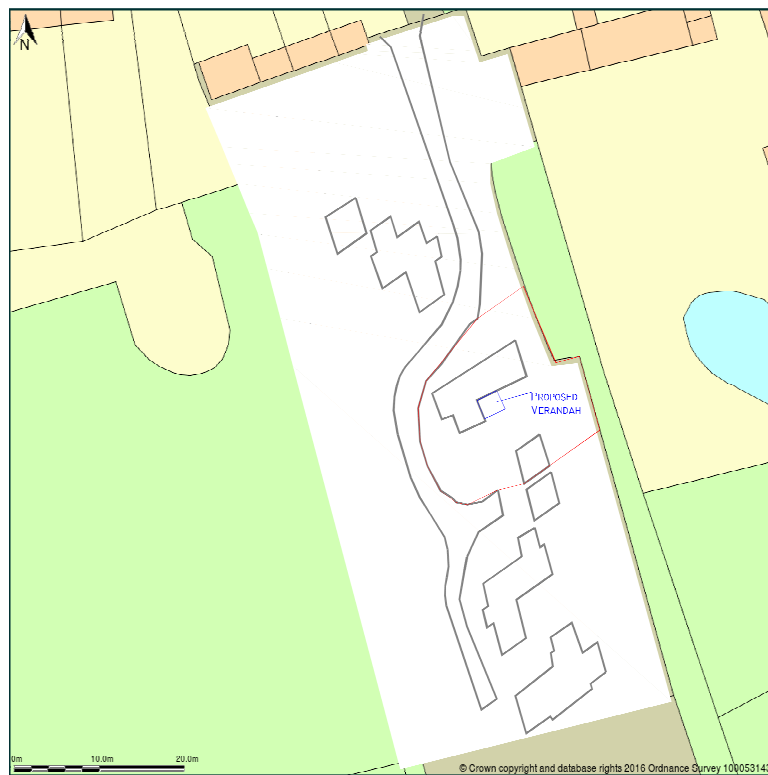
**Checked:** \_\_\_\_\_ **Drawn:** JM

**Scale:** 1 to 100 @ A3

**Contact:**  
Jonathan Miller  
Tel: 01543 361204, Mobile: 07811 170010  
Jon@veranda-living.co.uk  
Veranda Living Fabrications Limited, Unit 11, Toll Point,  
Litchfield Road, Brownhills, W88 5JF



GROUND FLOOR PLAN



Check Plan shows area bounded by: 487683.14, 443280.36 487713.14, 443410.38 (at a scale of 1:500). The representation of a road, track or path is no evidence of a right of way. The representation of features as lines is no evidence of a property boundary.

Produced on 17th Nov 2016 from the Ordnance Survey National Geographic Database and incorporating surveyed revision available at this date. Reproduction in whole or part is prohibited without the prior permission of Ordnance Survey. © Crown copyright 2016. Supplied by [www.buyaplan.co.uk](http://www.buyaplan.co.uk) a licensed Ordnance Survey partner (100053143). Unique plan reference: #00172629-55653A. Ordnance Survey and the OS Symbol are registered trademarks of Ordnance Survey, the national mapping agency of Great Britain. Buy A Plan logo, pdf design and the [www.buyaplan.co.uk](http://www.buyaplan.co.uk) website are Copyright © 1999 to 2016.

**March and April 2016**

**Schedule of Accounts for Payment**

<b>Item</b>	<b>Description</b>	<b>Total (£)</b>	<b>VAT (£)</b>
1) Alan Bravey	Salary March	49.70	-
2) Post Office	PAYE March	32.80	-
3) Alan Bravey	Reimbursement for Web Site Renewal	12.59	
4) Alan Bravey	Microsoft Office Reimbursement	110.91 (186.90 less 75.99)	31.15 in total
5) Alan Bravey	Working from Home Allowance	100	
6) Alan Bravey	2016/17 Postage	54.45	
7) Zurich Insurance	2017 Insurance Premium	337.04	
8) Trevor Rachkam	Internal Audit Fee	192	38.4
9) Alan Bravey	Salary April	49.30	
10) Post Office	PAYE April	33.20	
<b>TOTAL</b>		971.99	69.55